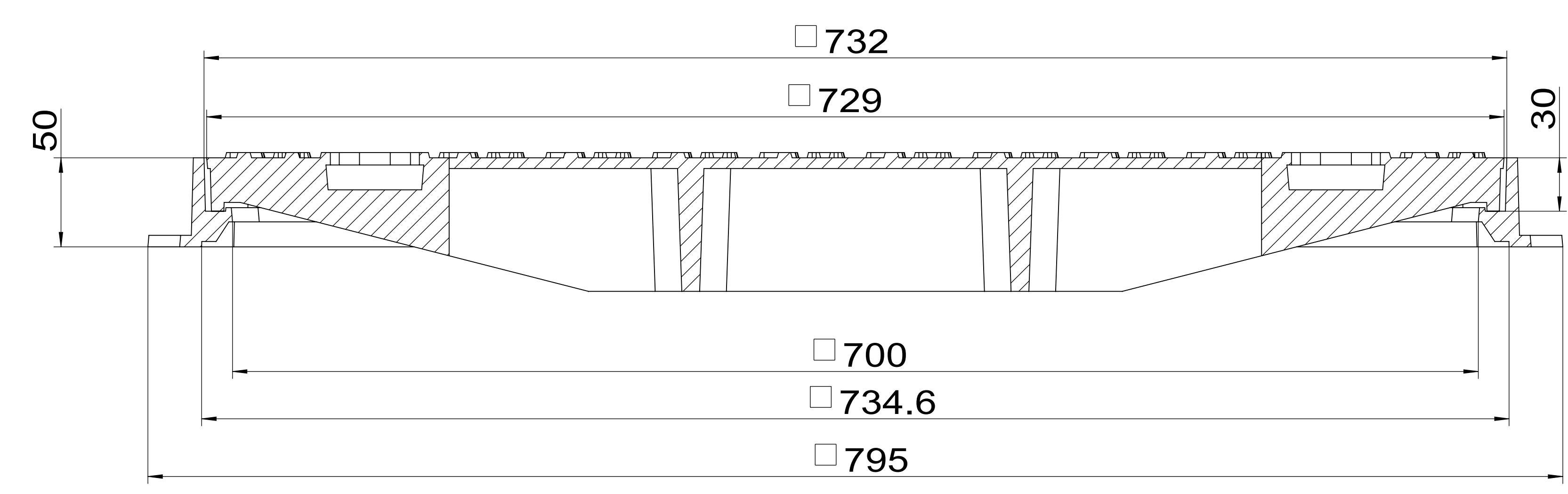


B →

B-B

A-A



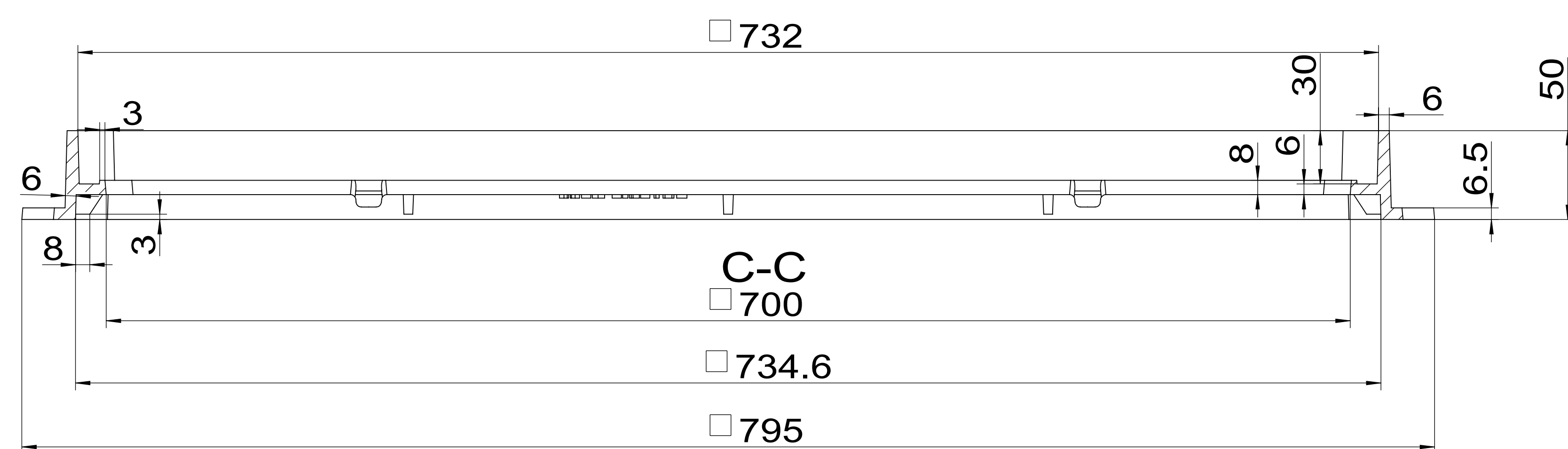
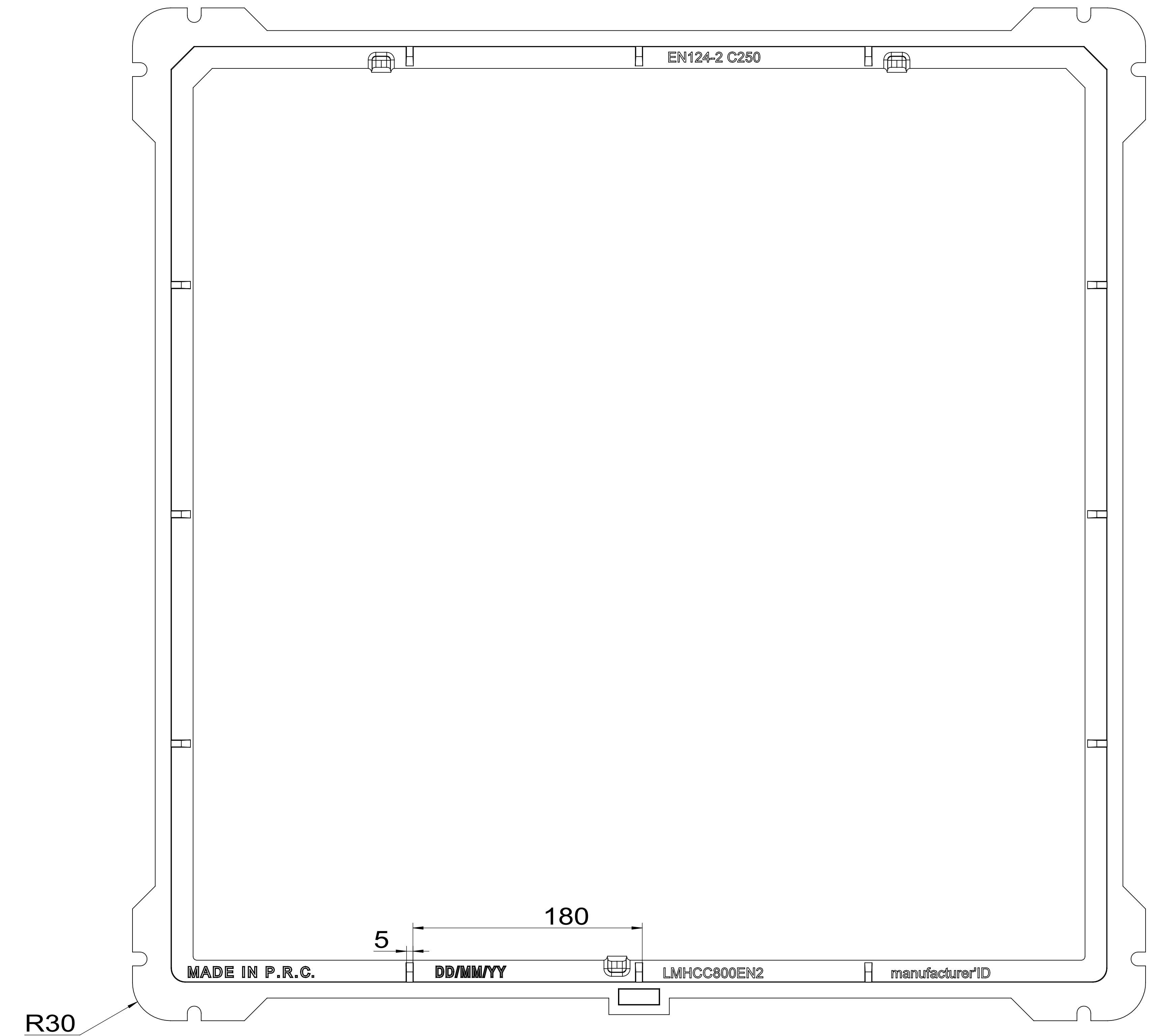
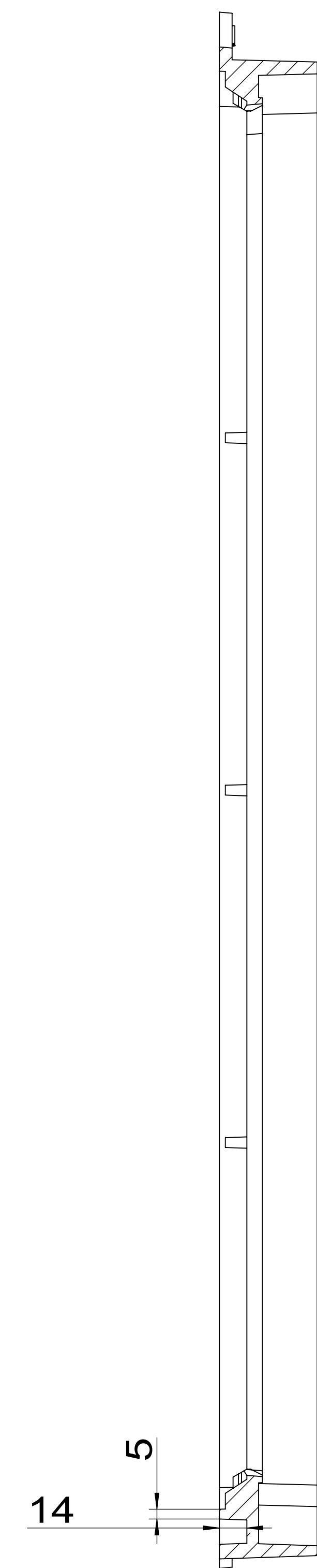
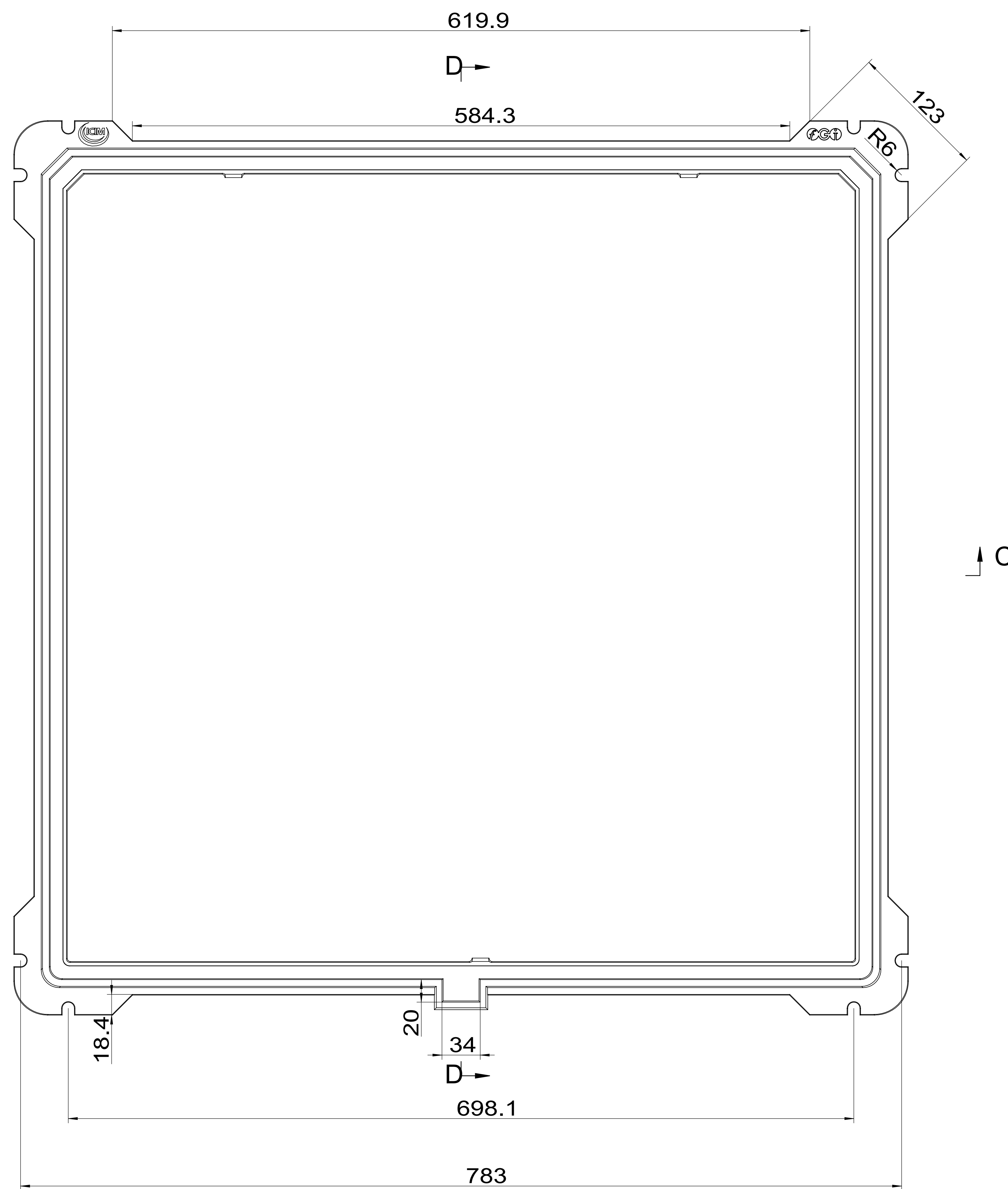
**Technical requirement**

1. pattern draft is 1-2° of main beams ,cover ,grids, frame side.
2. pattern draft is 5-10° of assistive beams ,gird holes ,outside.
3. pattern draft is 15° of surface patterns ,mark, logo.
4. casting radius which aren't been marked is R1-R3.

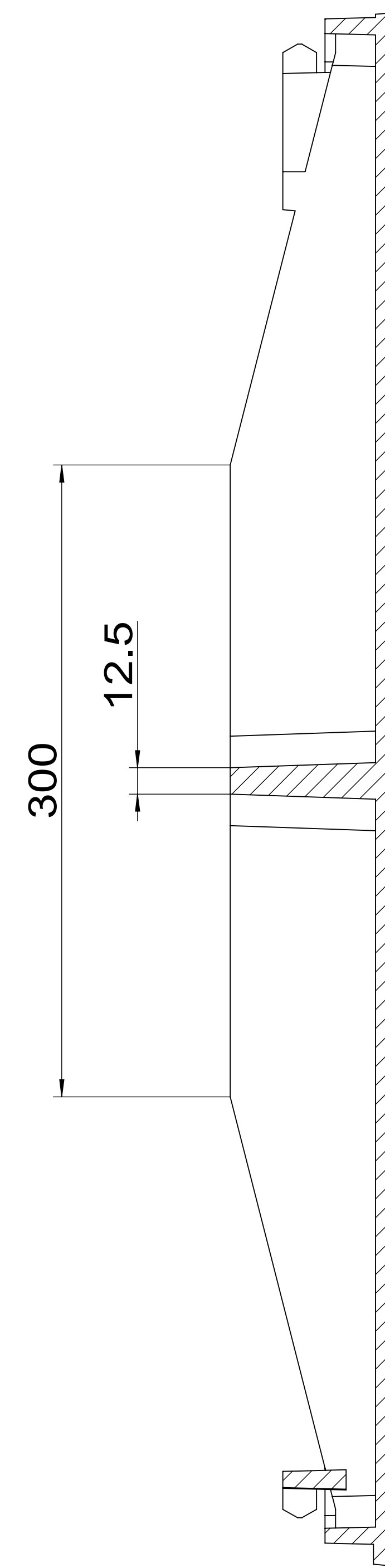
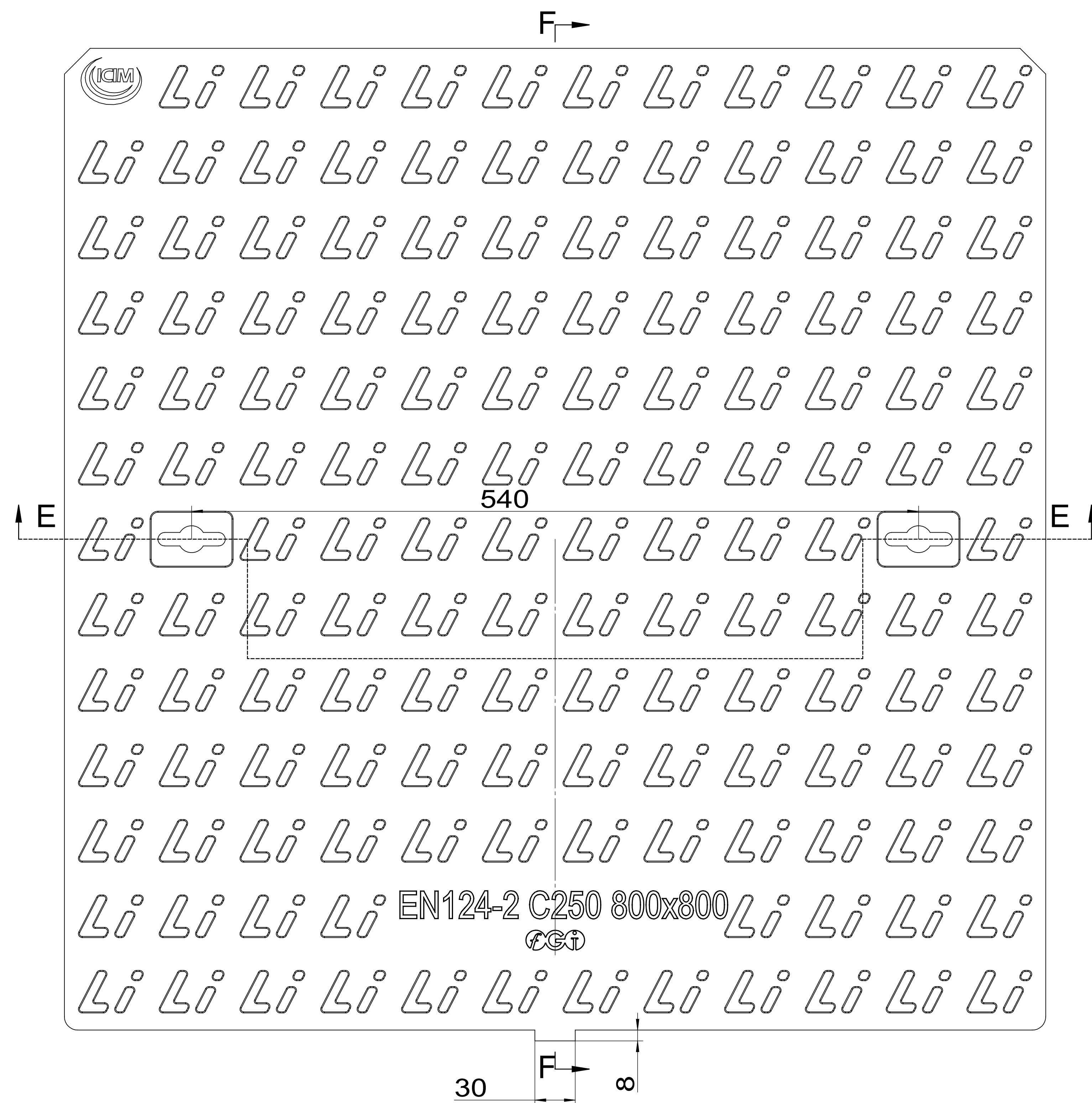
General Dimension Tolerance		General Weight Tolerance	
According To ISO 8062-CT10		Tolerance(%)	
		±5%	

MATERIAL	GJS500-7	WEIGHT/kg	52kg	CLASS	EN124-2 C250	SCALE	MARK:
						SIZE	CERTIFICATE NO. /
						795x795x50	PRODUCT CODE
						NAME	L-LGSMEN-280L
				ITEM CODE			
				DESIGN DATE			
				2017/6/28	EDITION	SHEET	
					0	1/3	

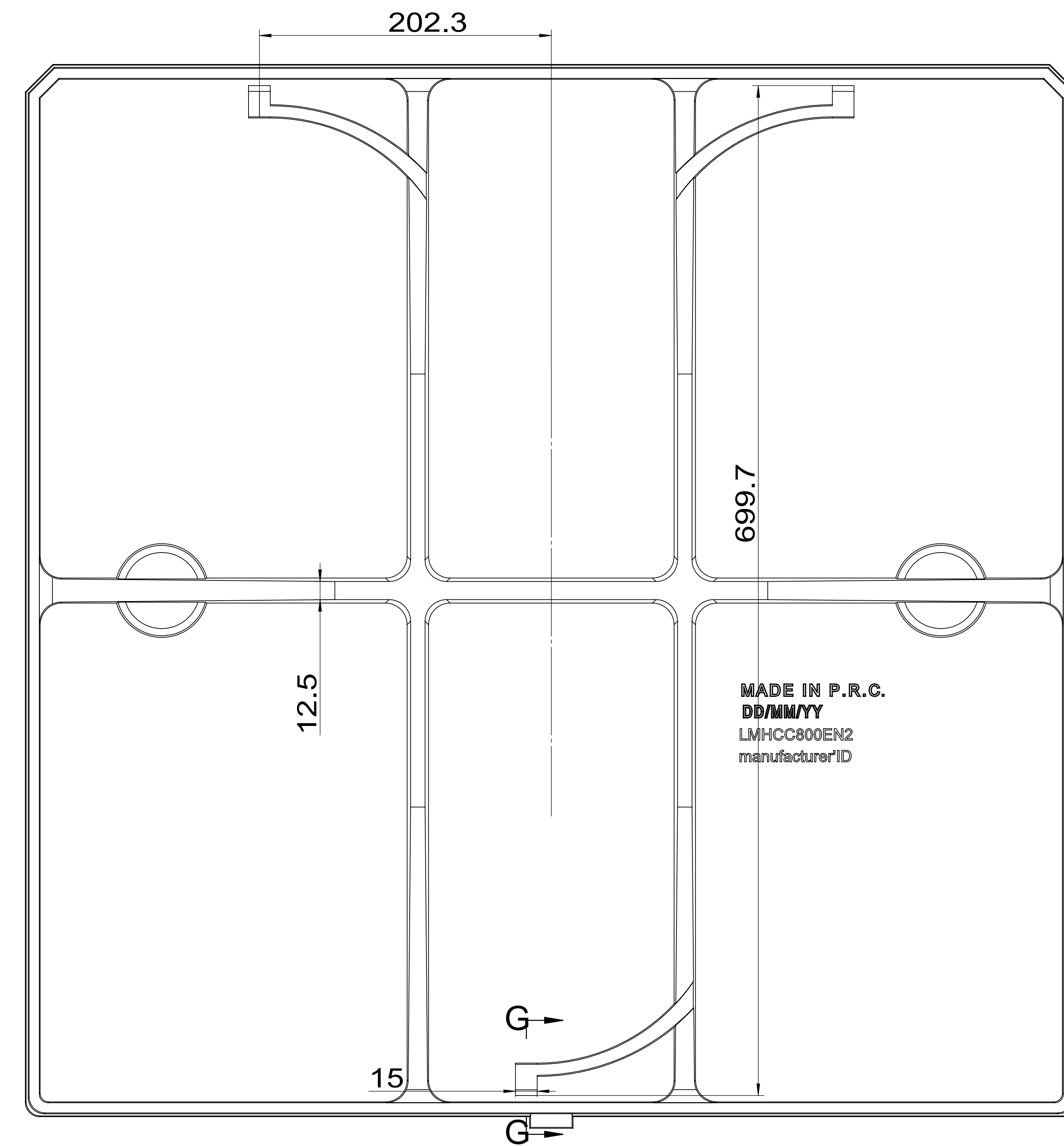




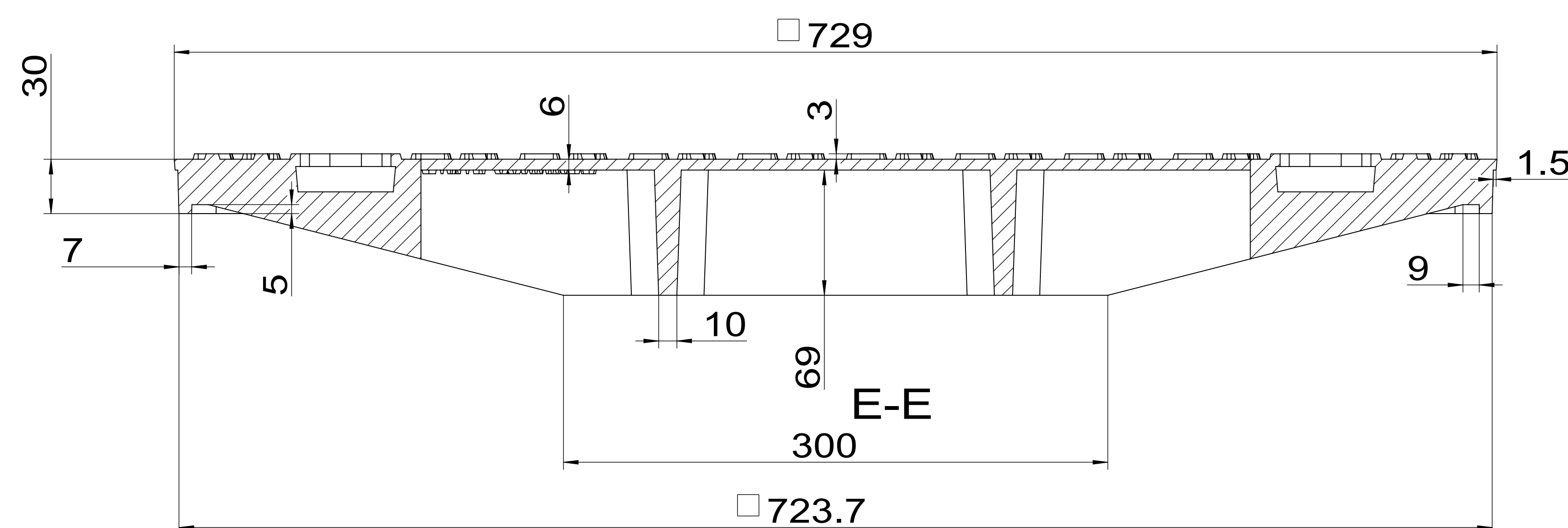
MATERIAL	GJS500-7	WEIGHT/kg	10.6kg	CLASS	EN124-2 C250	SCALE	MARK:			
						SIZE 795x795x50	CERTIFICATE NO. / PRODUCT CODE			
						NAME	L-LGSMEN-280L			
		ITEM CODE			DESIGN DATE	2017/6/28	EDITION	0	SHEET	2/3



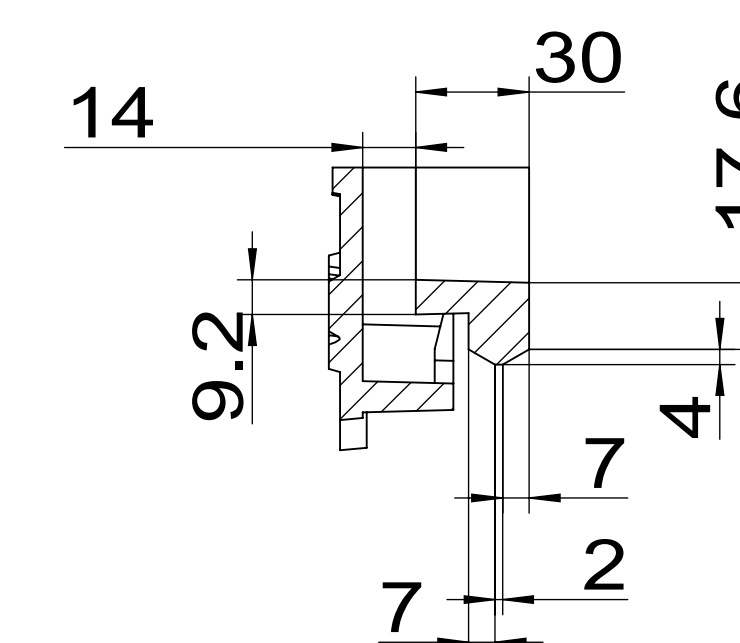
F-F



G-G



E-E



MATERIAL	GJS500-7	WEIGHT/kg	41.4kg	CLASS	EN124-2 C250	SCALE	MARK:
						SIZE	CERTIFICATE NO. /
						795x795x50	PRODUCT CODE
						NAME	
						ITEM CODE	L-LGSMEN-280L
						DESIGN DATE	EDITION
						2017/6/28	0
							SHEET
							3/3

