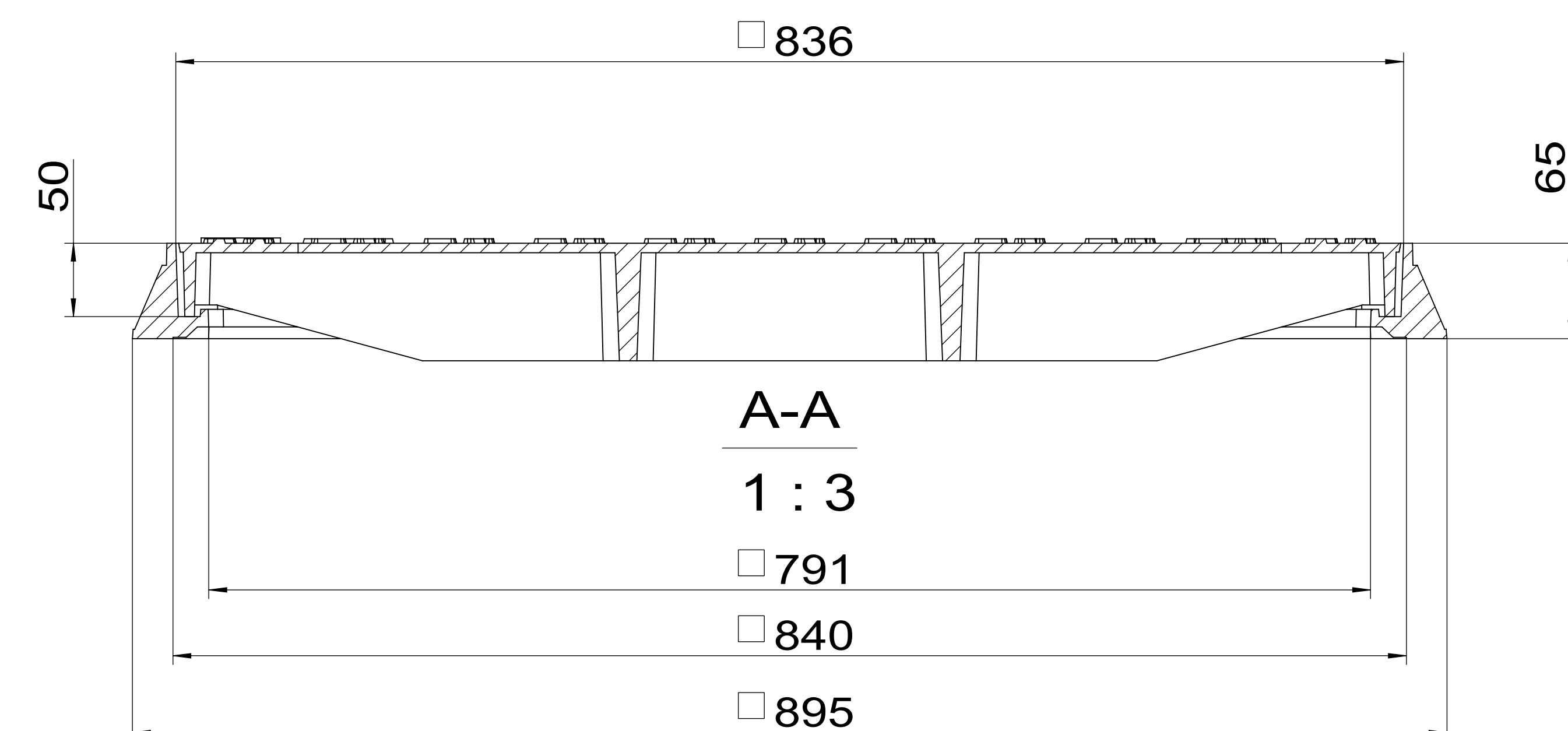
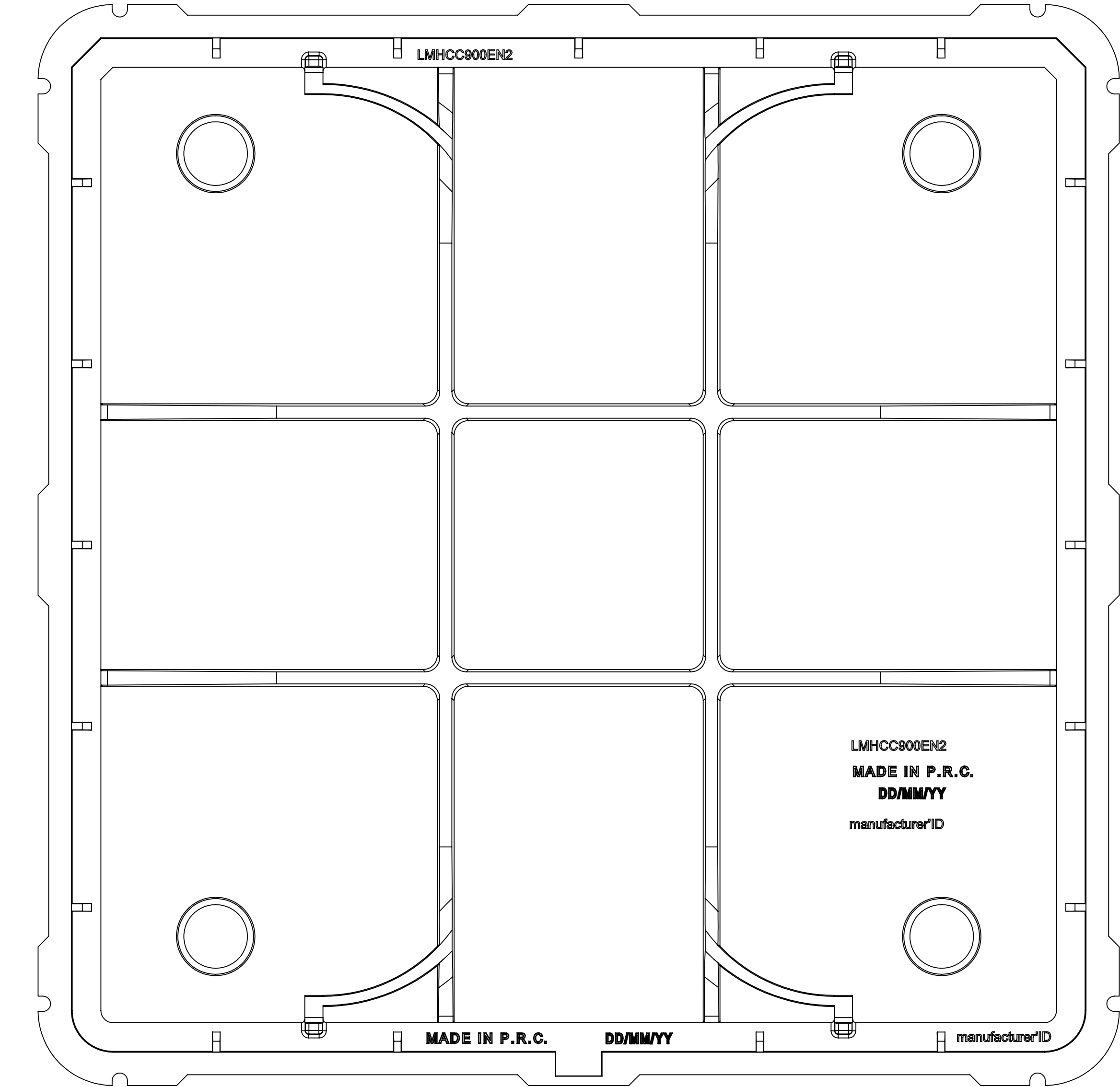
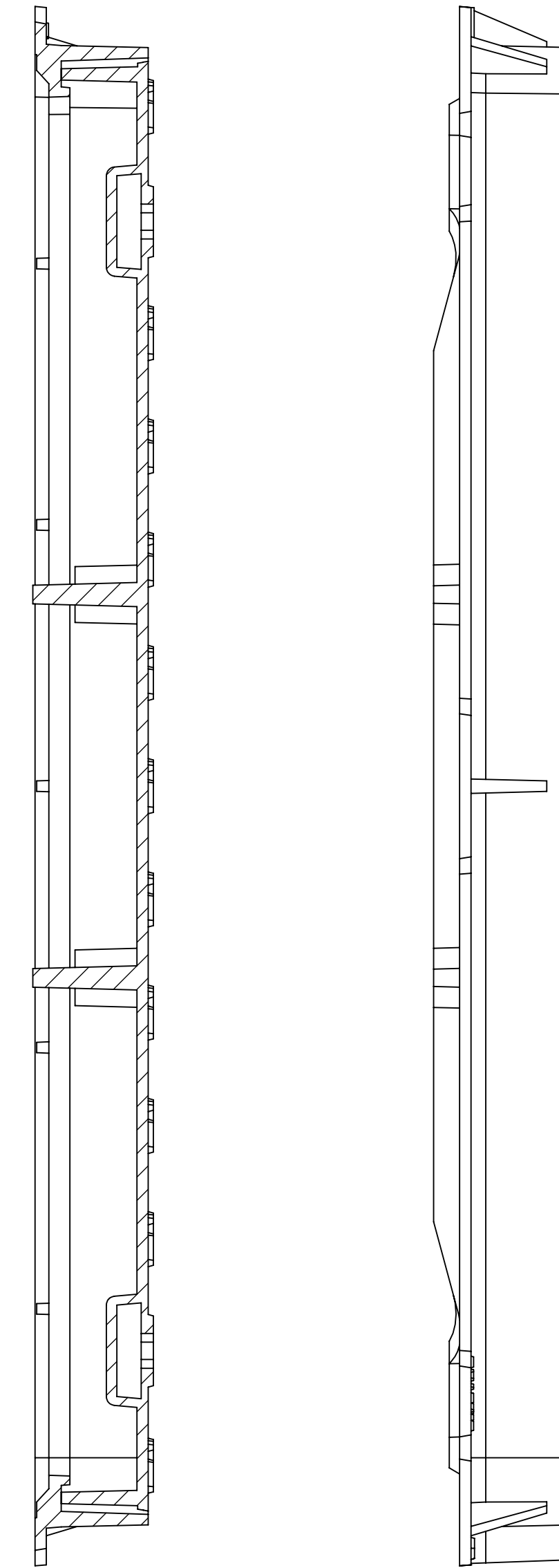


B-B
1 : 3



A-A

1 : 3

□ 791

□ 840

□ 895

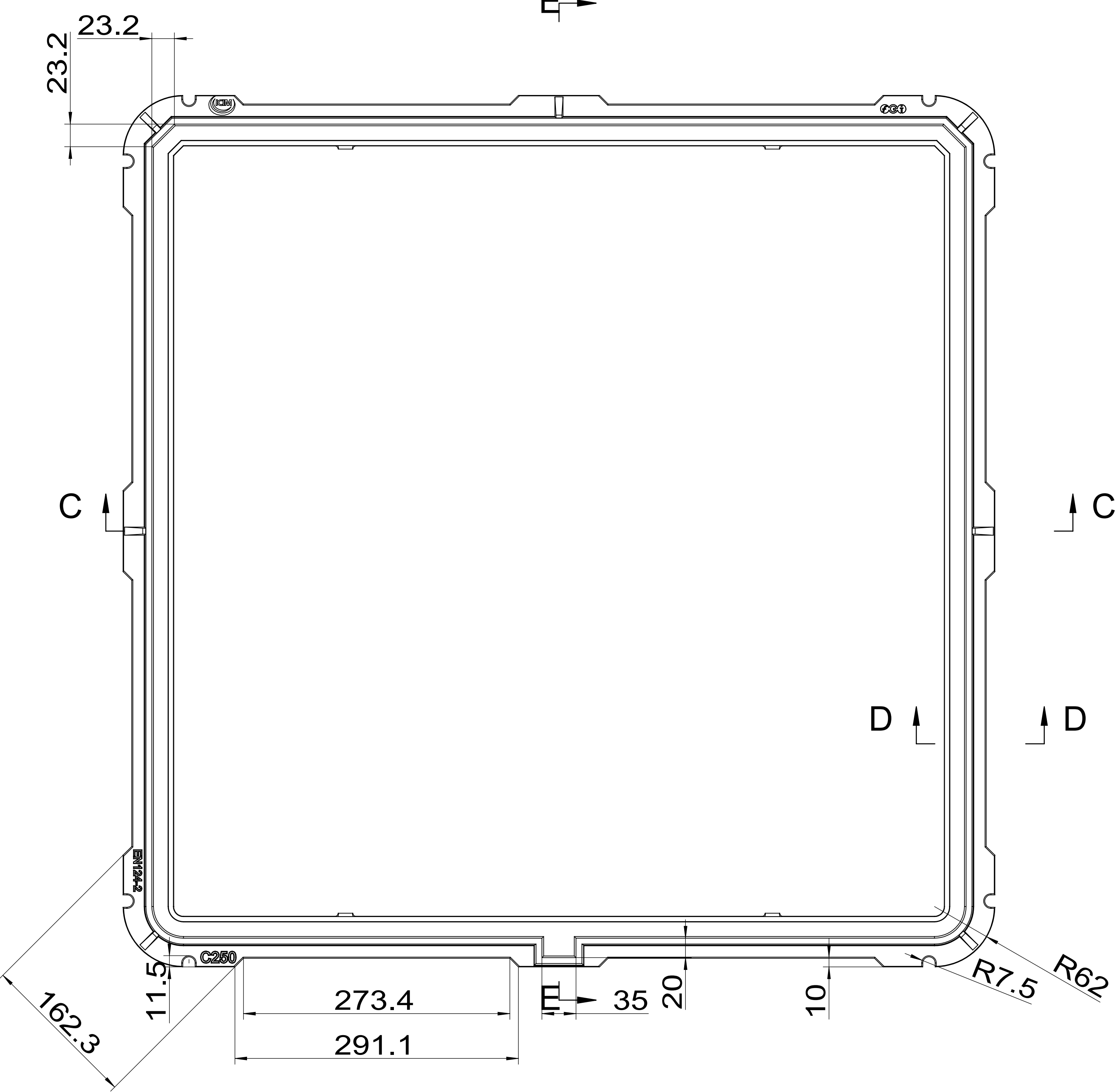
Technical requirement

- 1、 pattern draft is 1-2° of main beams ,cover ,grids, frame side.
- 2、 pattern draft is 5-10° of assistive beams ,gird holes ,outside.
- 3、 pattern draft is 15° of surface patterns ,mark, logo.
- 4、 casting radius which aren't been marked is R1-R3.

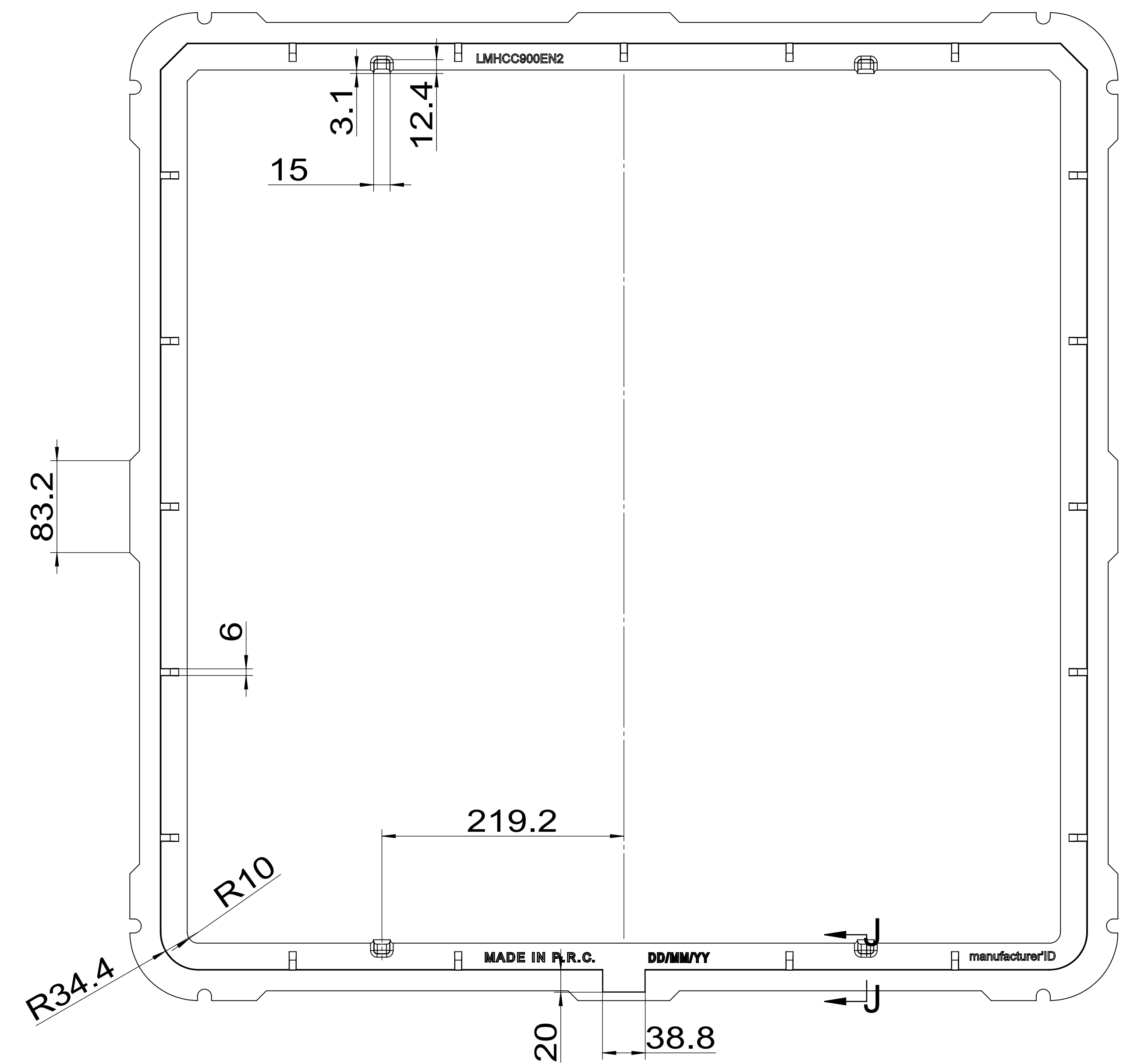
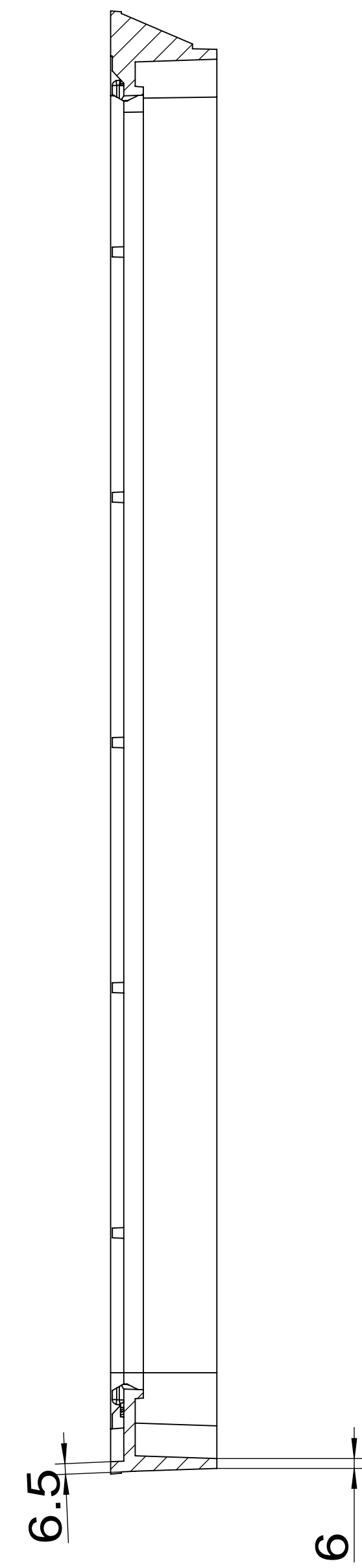
General Dimension Tolerance
According To ISO 8062-CT10

General Weight Tolerance
Tolerance(%)
±5%

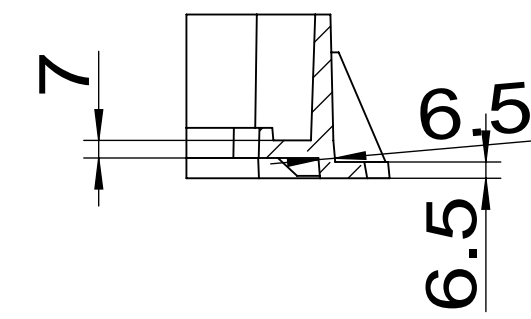
MATERIAL	GJS500-7	WEIGHT/kg	81	CLASS	EN124-2 C250	SCALE	MARK:
						SIZE	CERTIFICATE NO. /
						895X895X65	PRODUCT CODE
						NAME	L-LGSMEN-290L
						ITEM CODE	
				DESIGN DATE	2017/6/28		



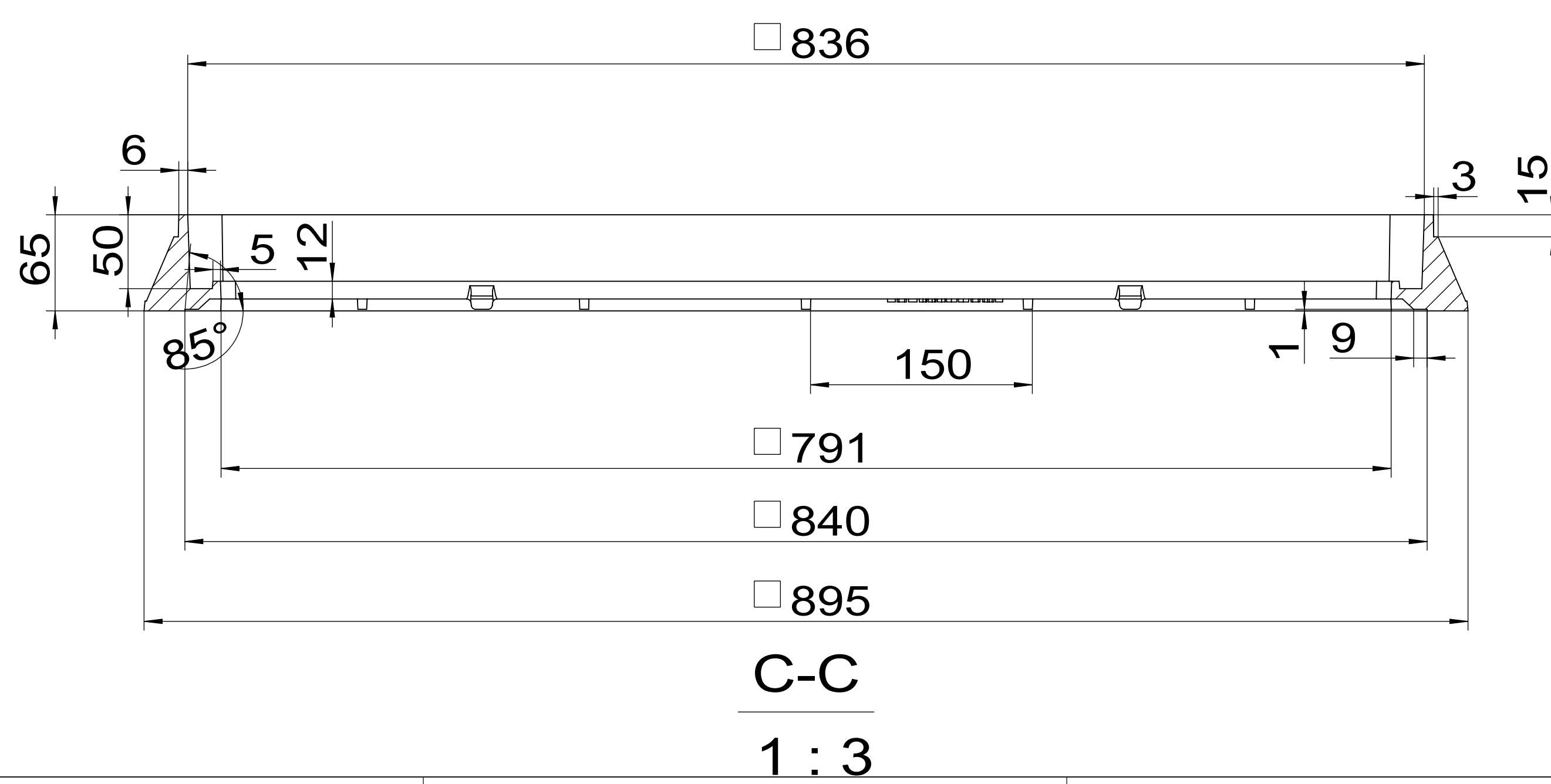
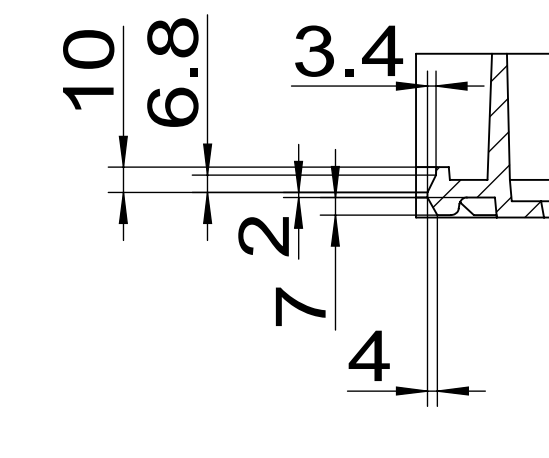
E-E
1 : 3



D-D
1 : 3



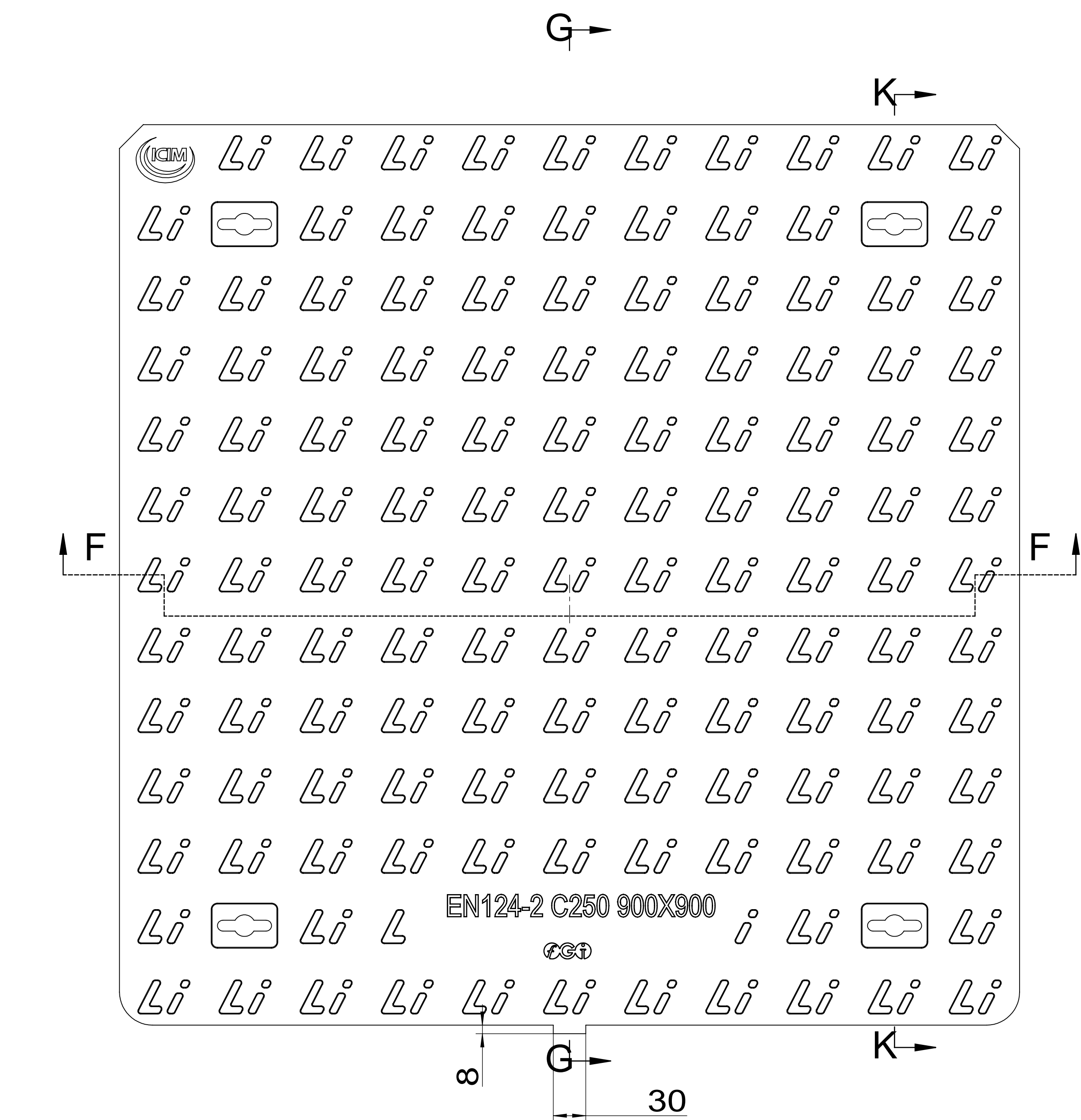
J-J
1 : 3



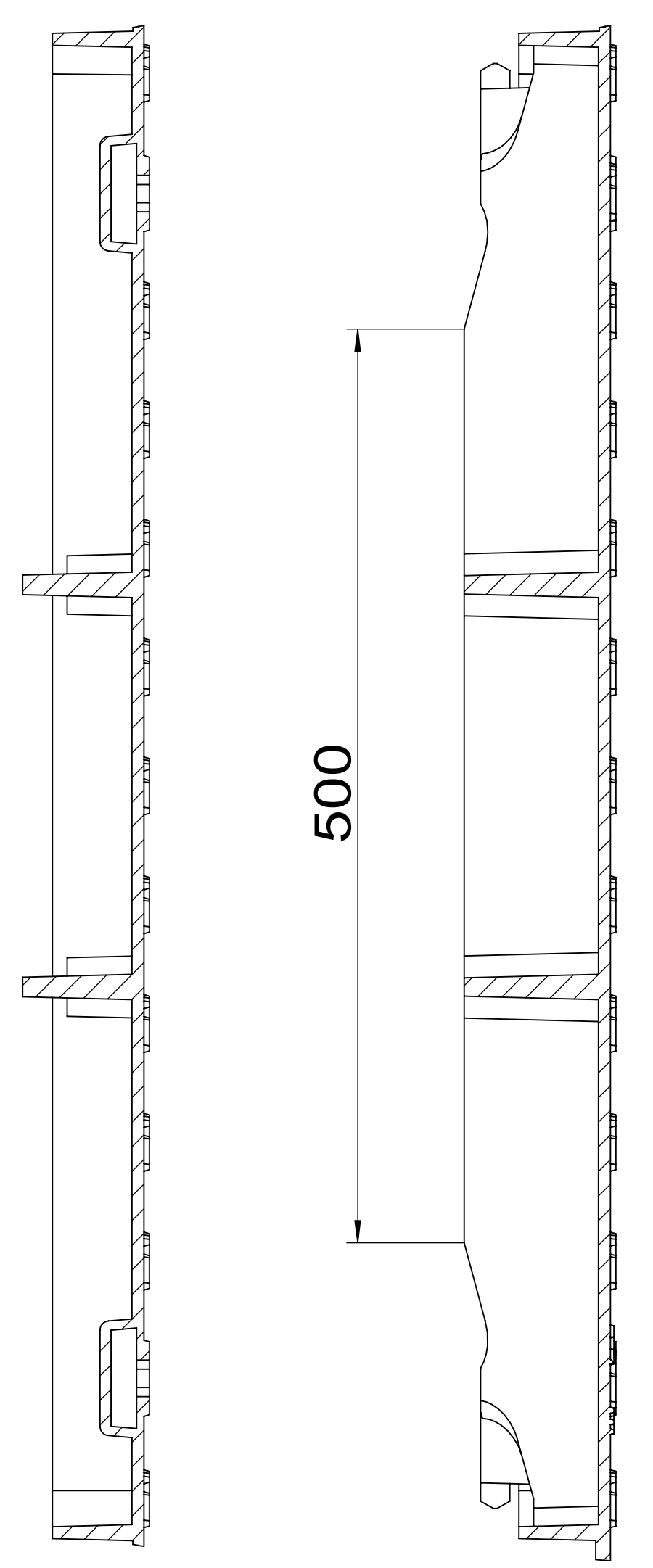
C-C
1 : 3

MATERIAL	GJS500-7	WEIGHT/kg	18.3	CLASS	EN124-2 C250	SCALE	MARK:
						SIZE	CERTIFICATE NO. /
						895X895X65	PRODUCT CODE
						NAME	
						ITEM CODE	L-LGSMEN-290L
						DESIGN DATE	EDITION
						2017/6/28	0
							SHEET
							2/3

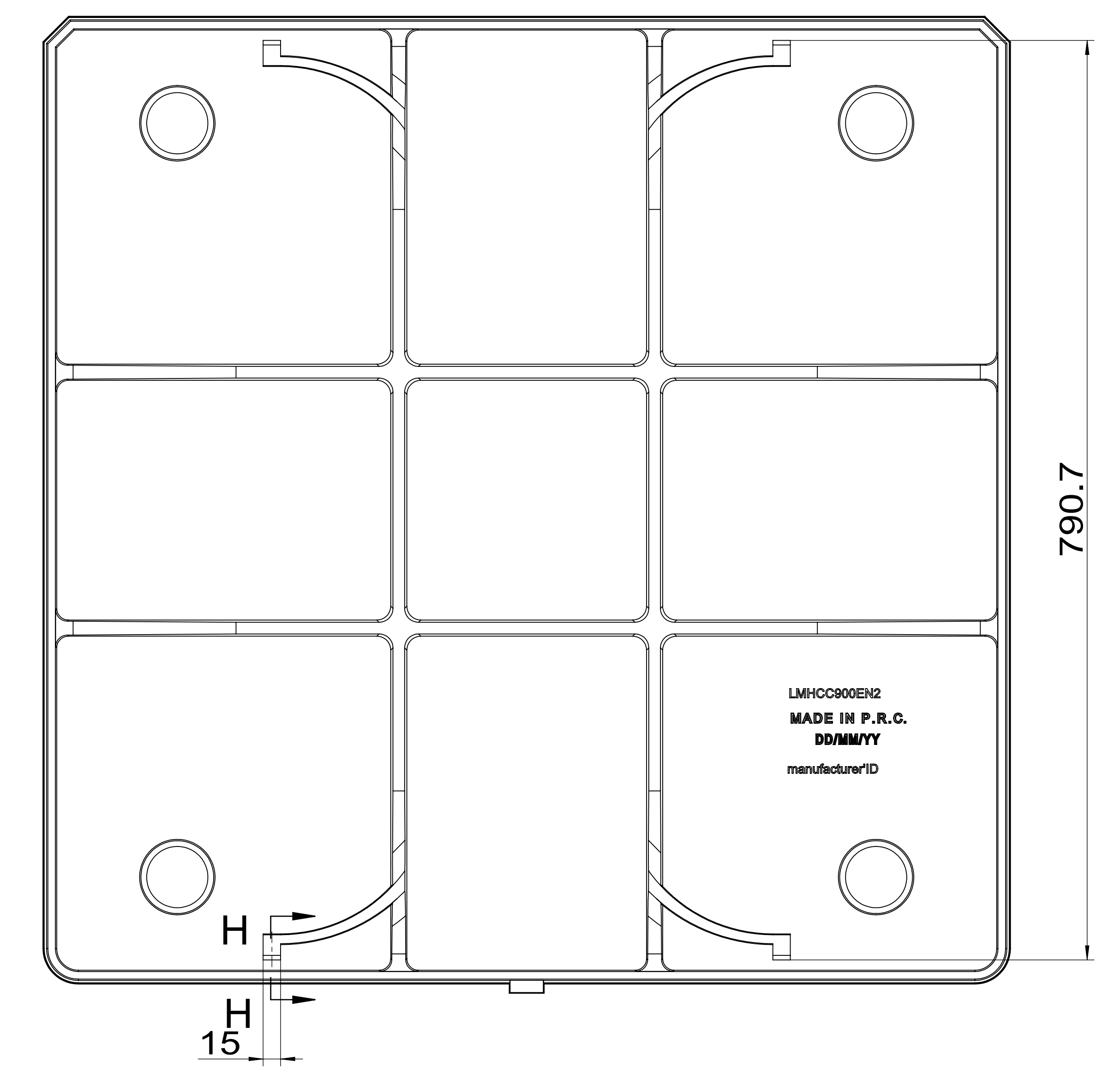
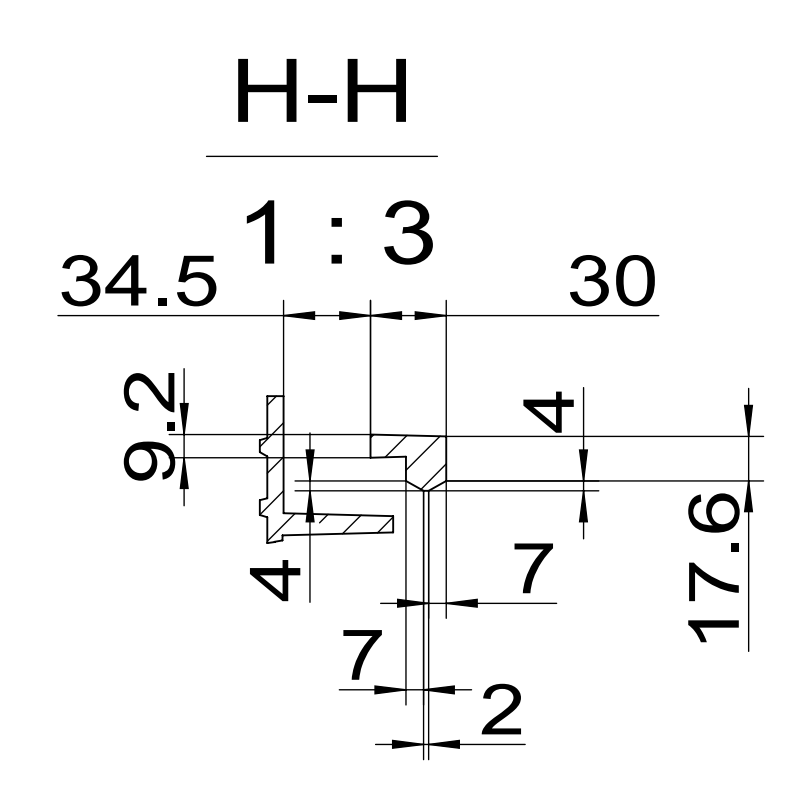
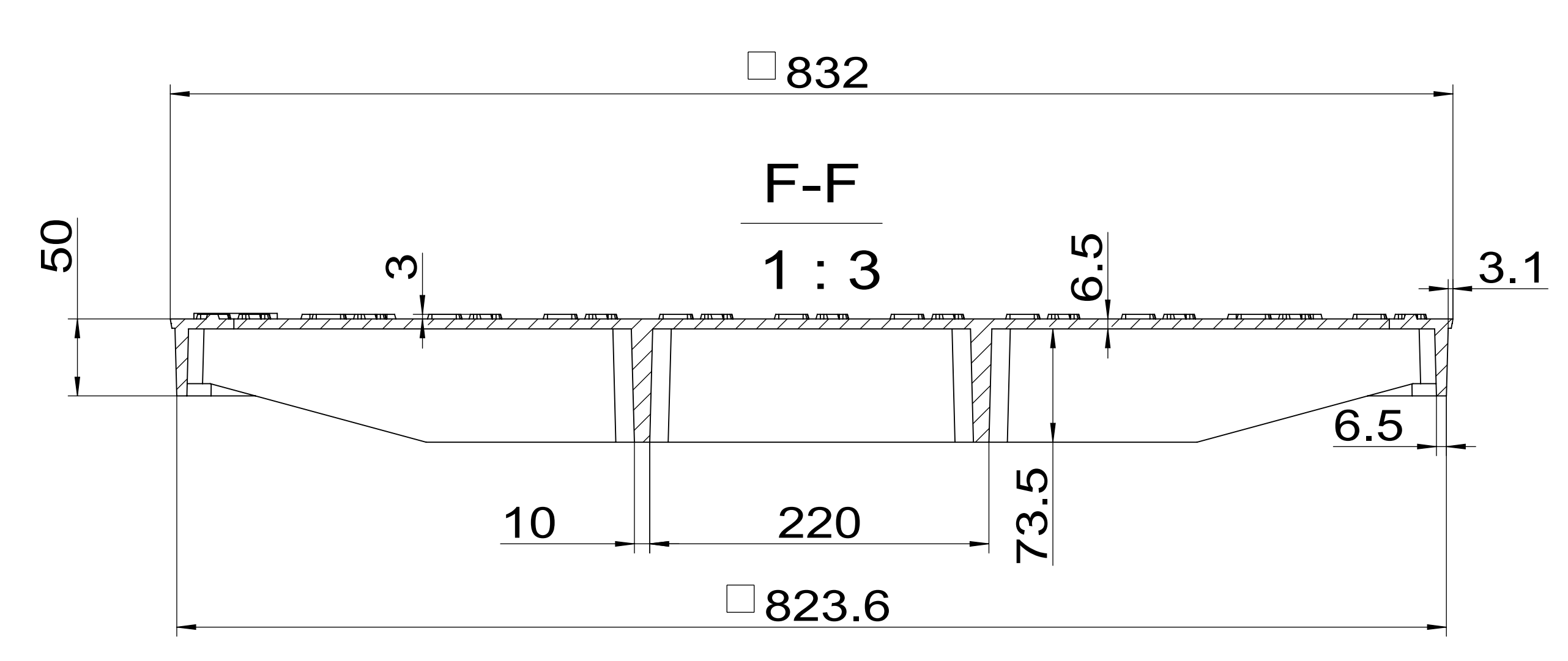




K-K
1:3



G-G
1:3



MATERIAL	GJS500-7	WEIGHT/kg	62.7	CLASS	EN124-2 C250	SCALE	MARK:
						SIZE	CERTIFICATE NO. /
						895X895X65	PRODUCT CODE
						NAME	L-LGSMEN-290L
						ITEM CODE	
						DESIGN DATE	2017/6/28