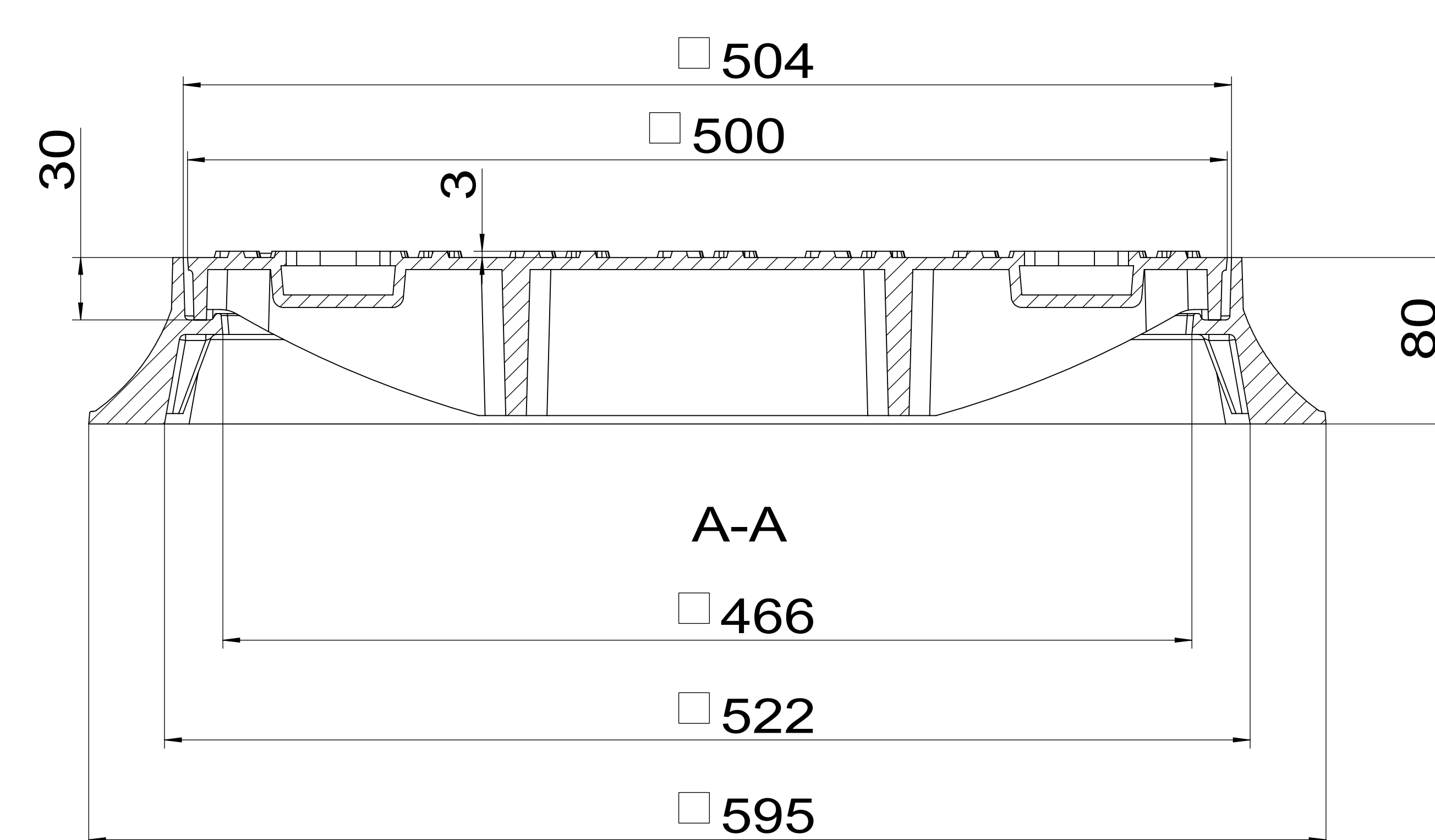
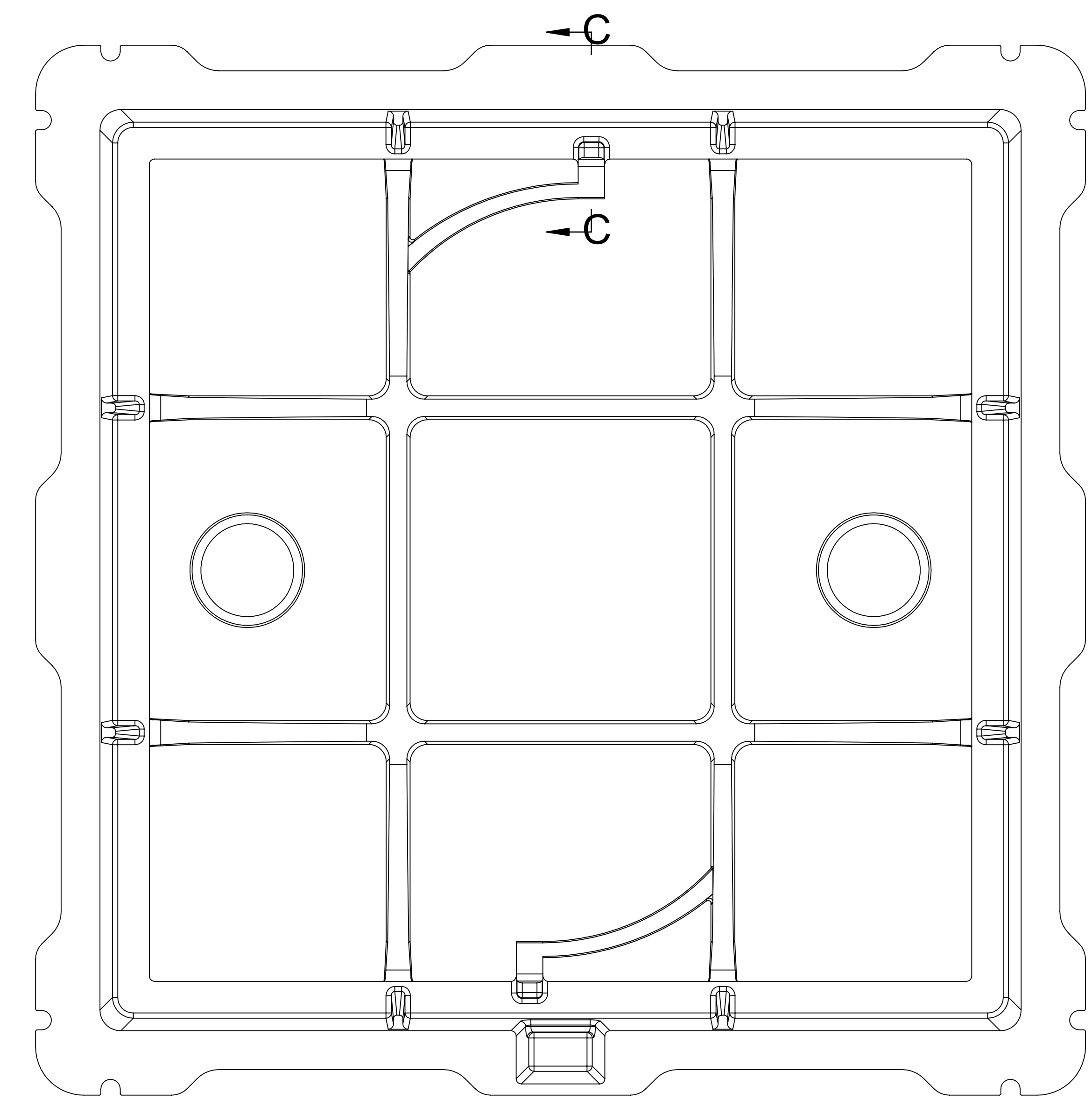
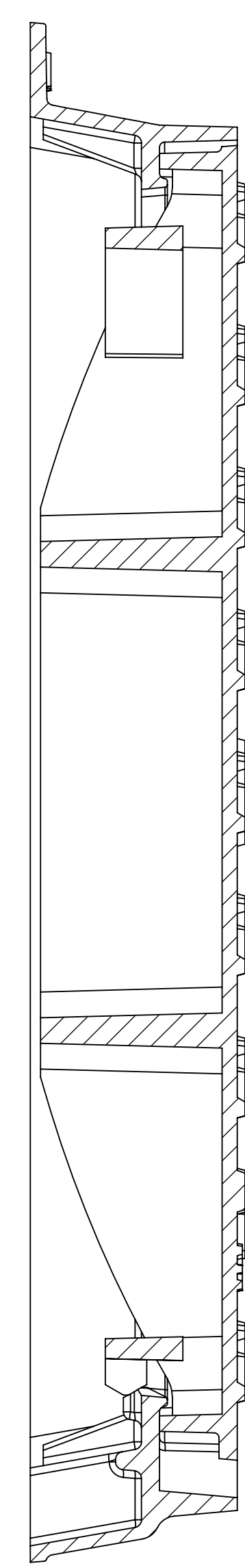
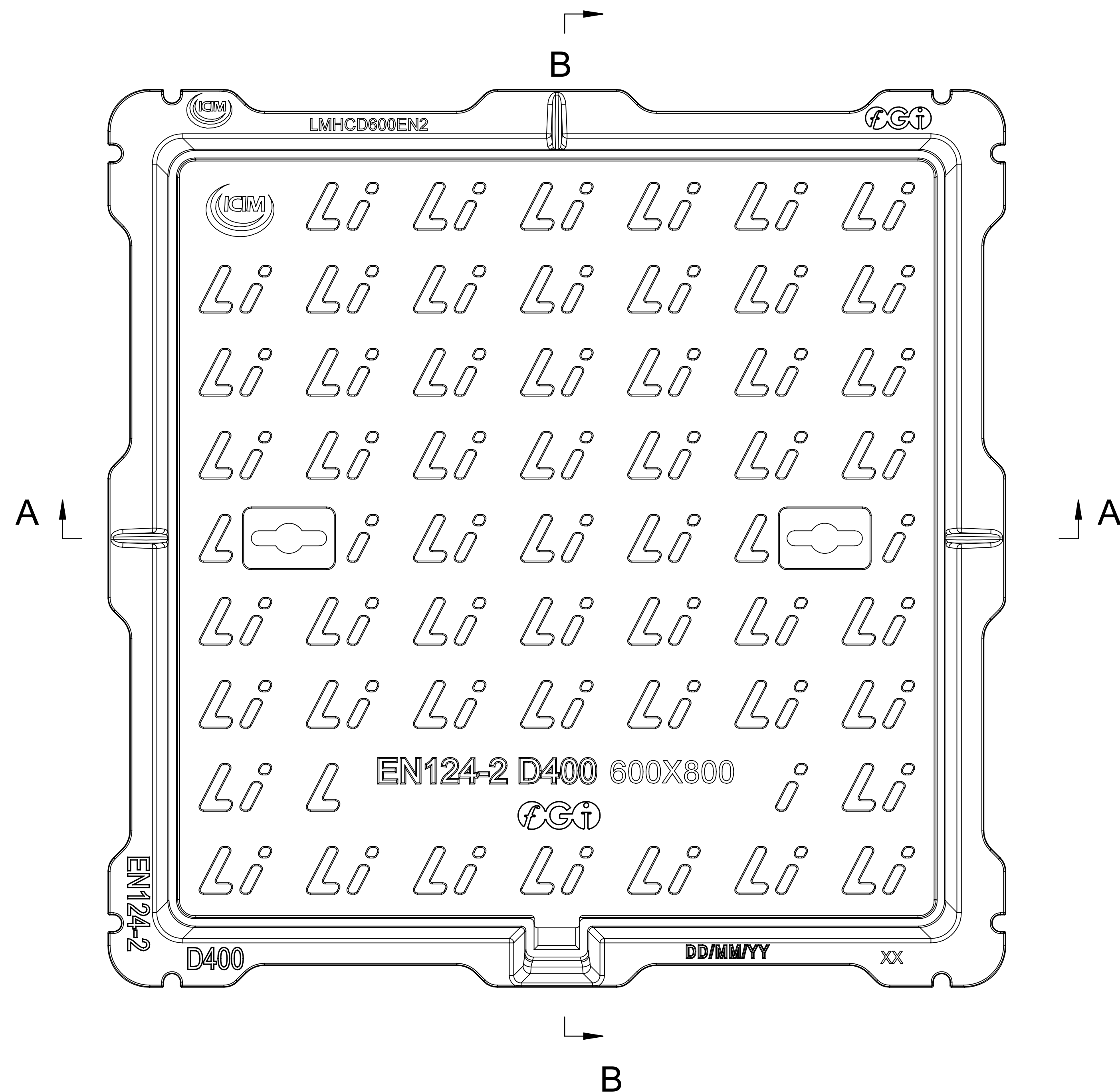



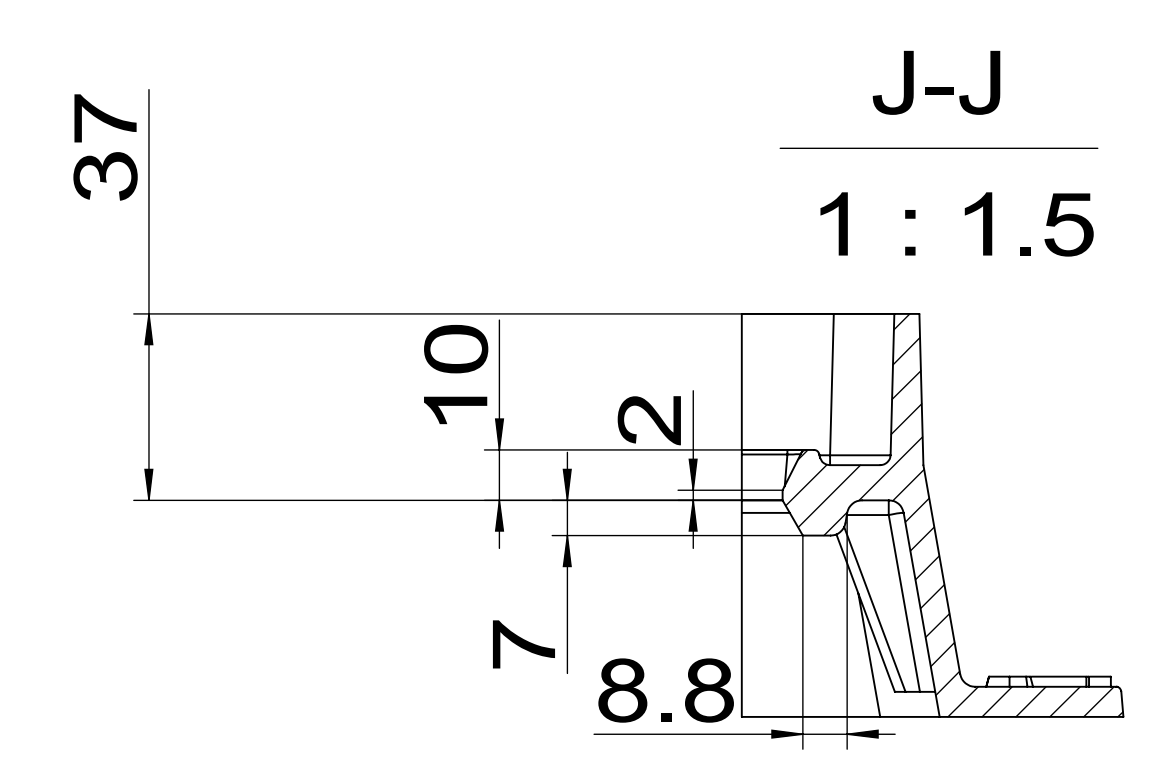
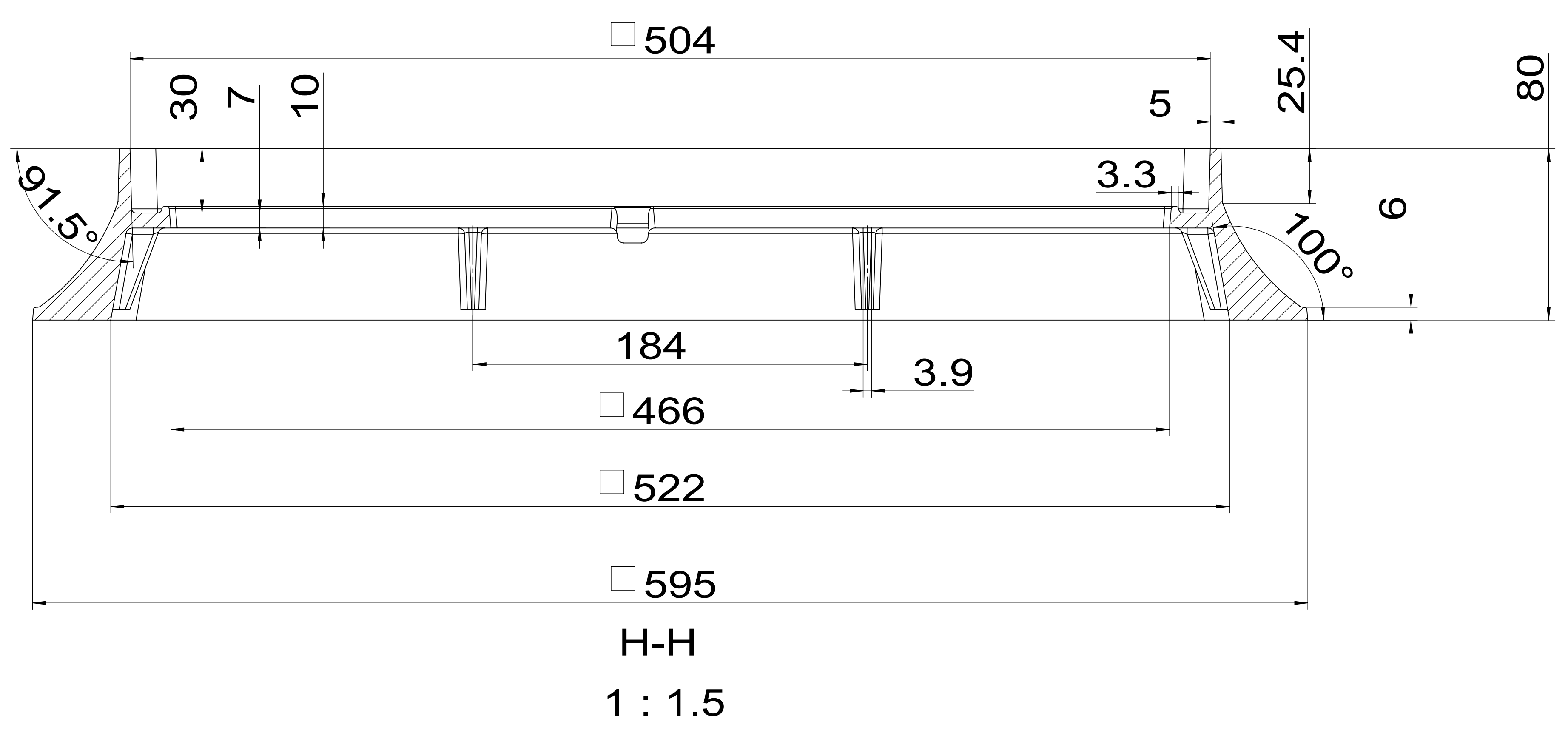
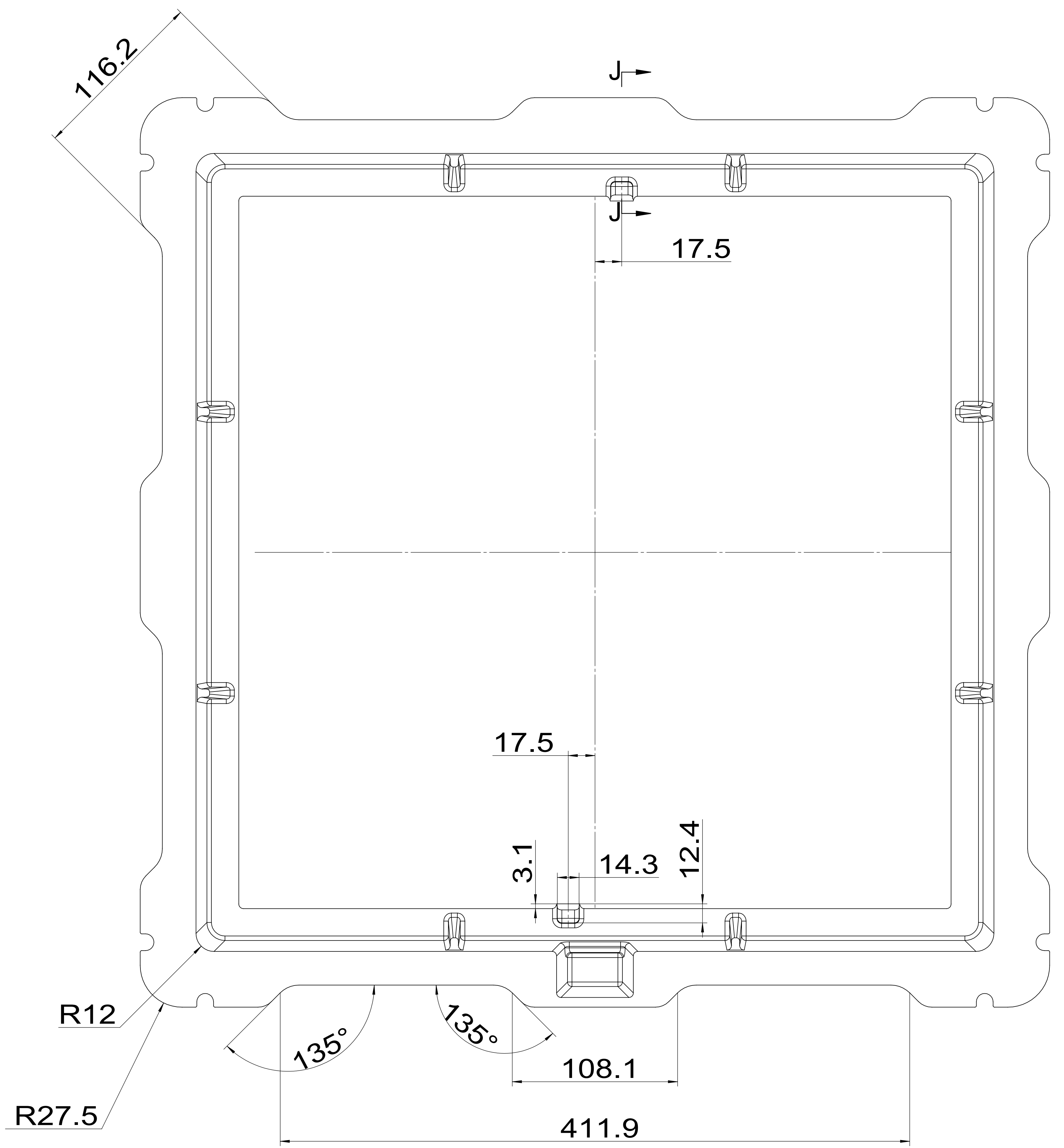
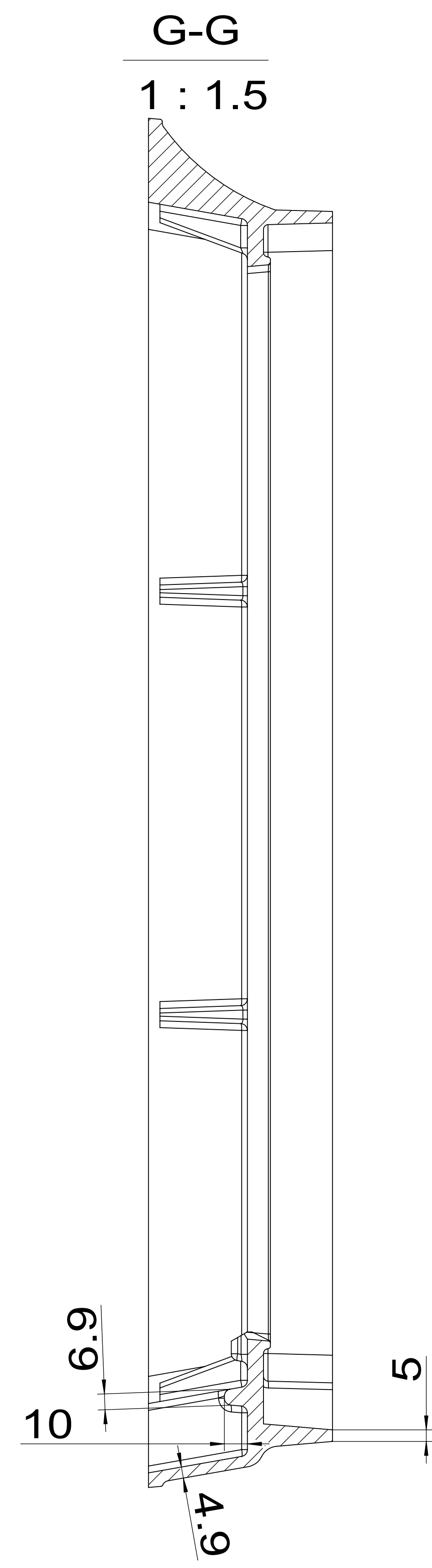
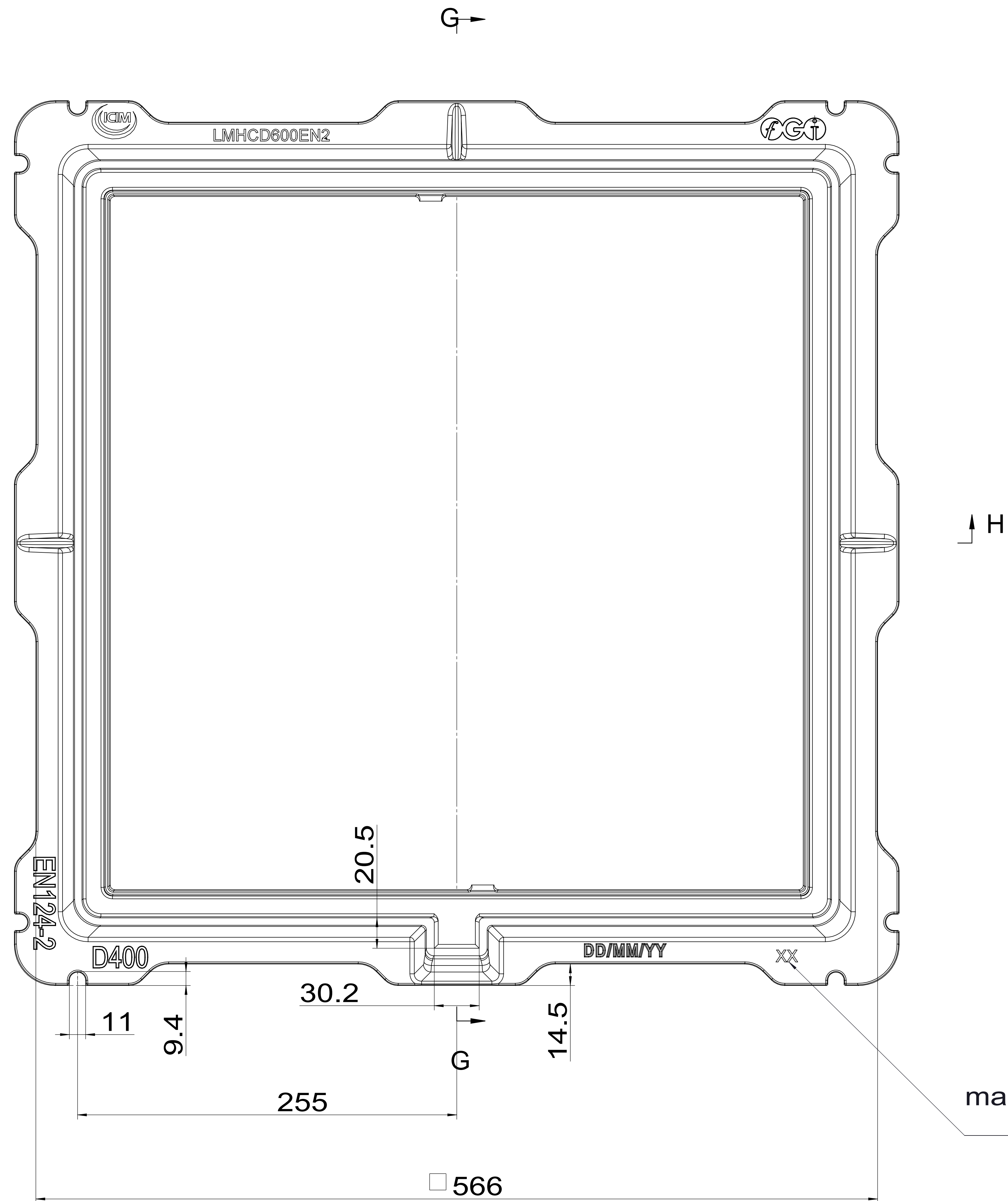
B-B




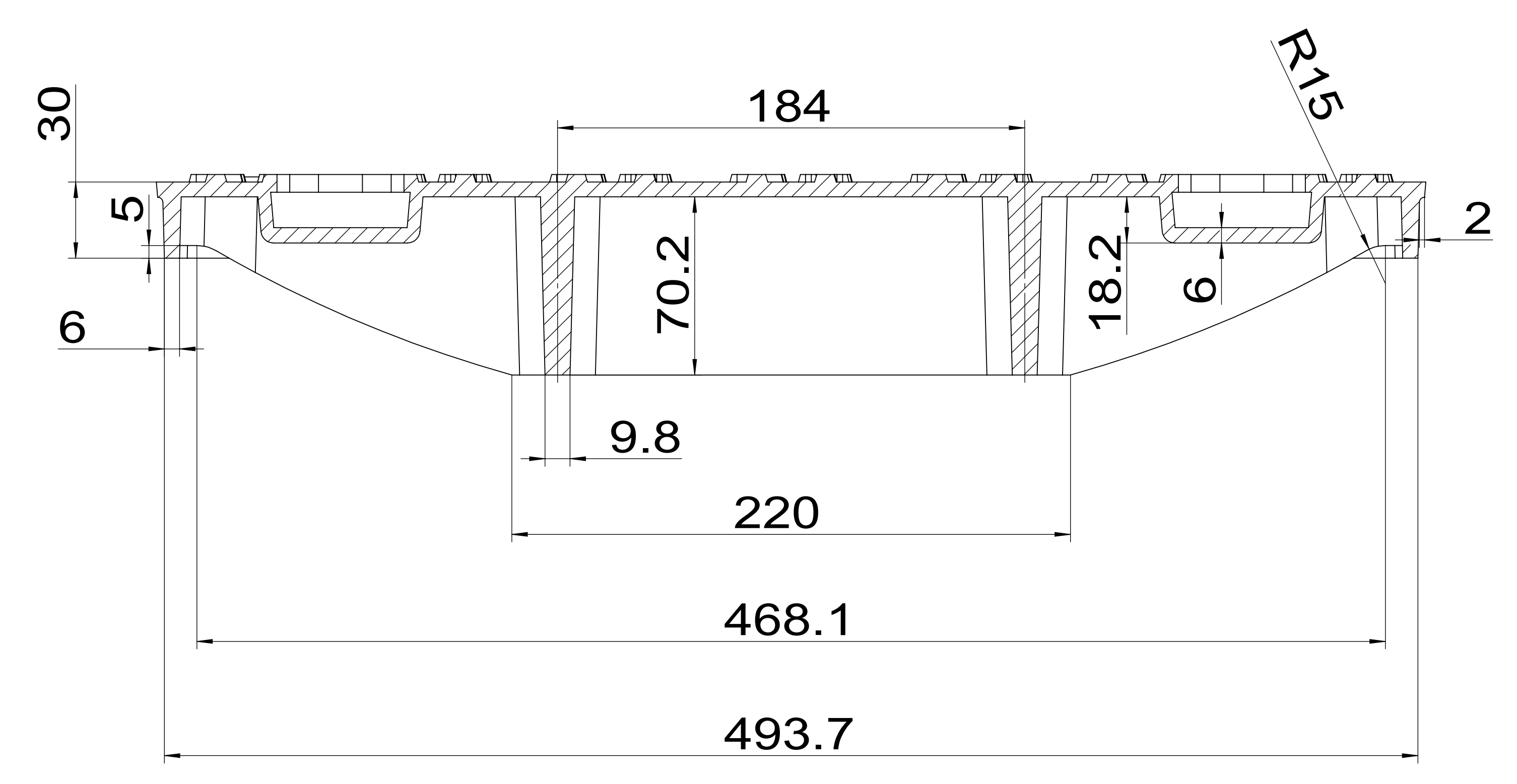
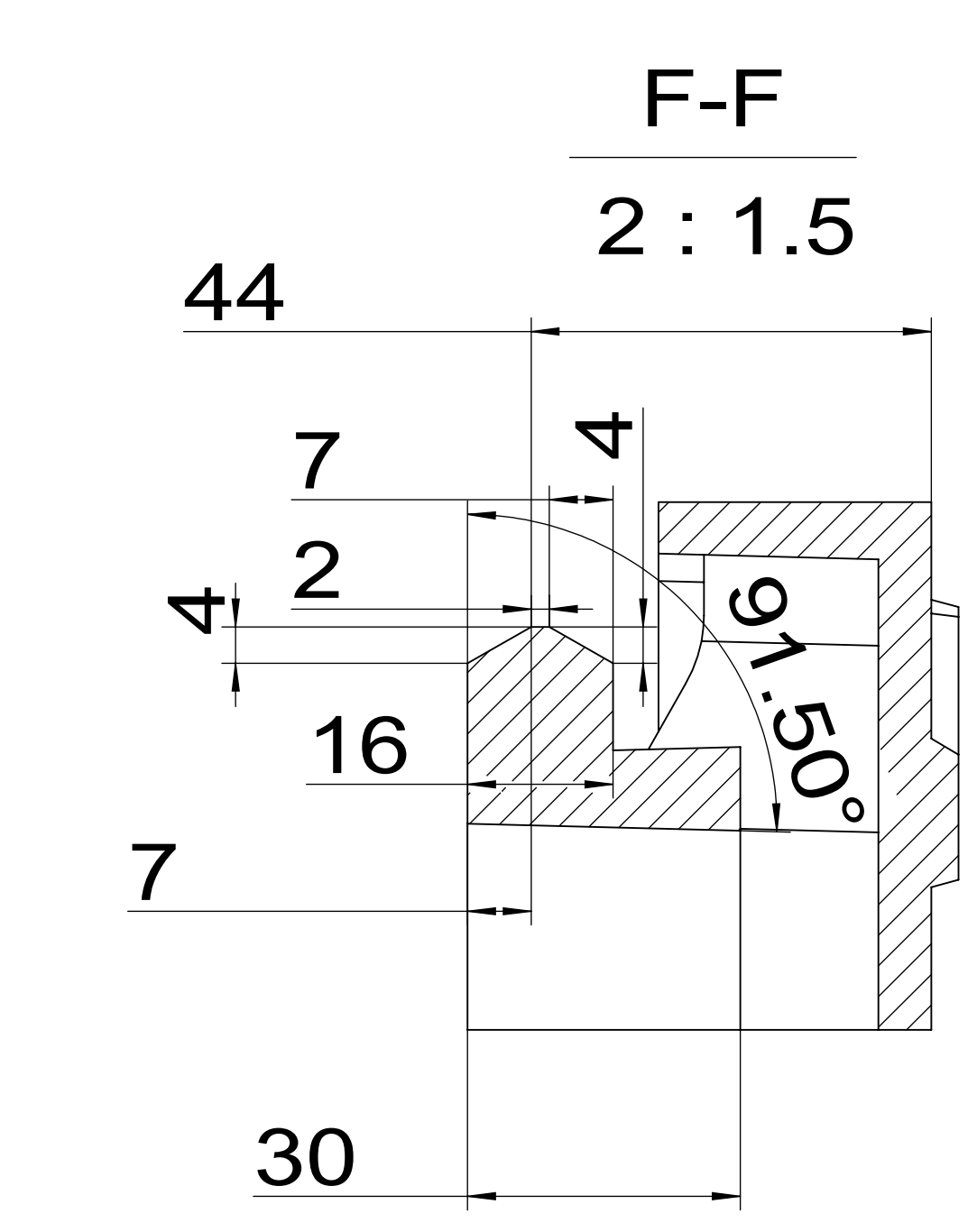
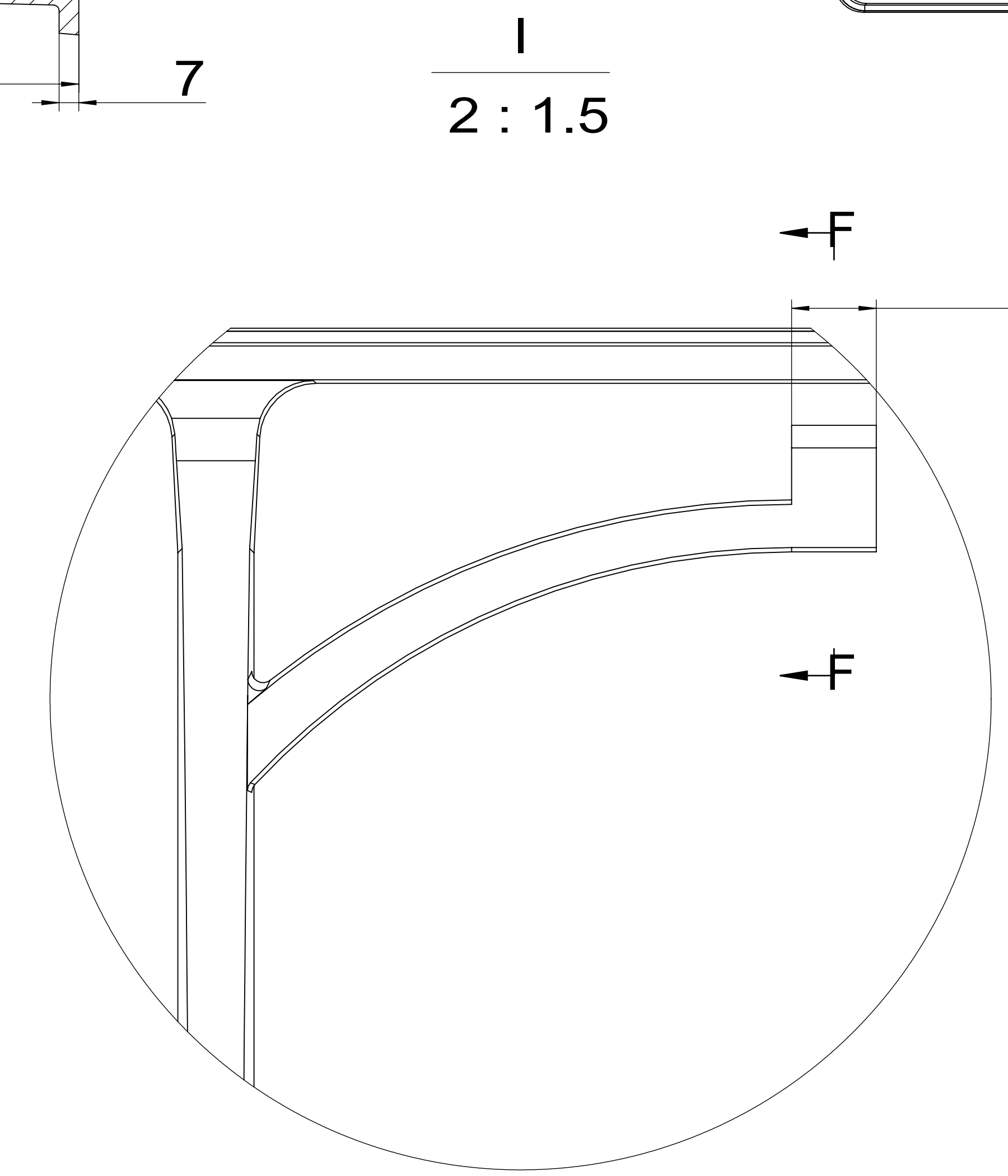
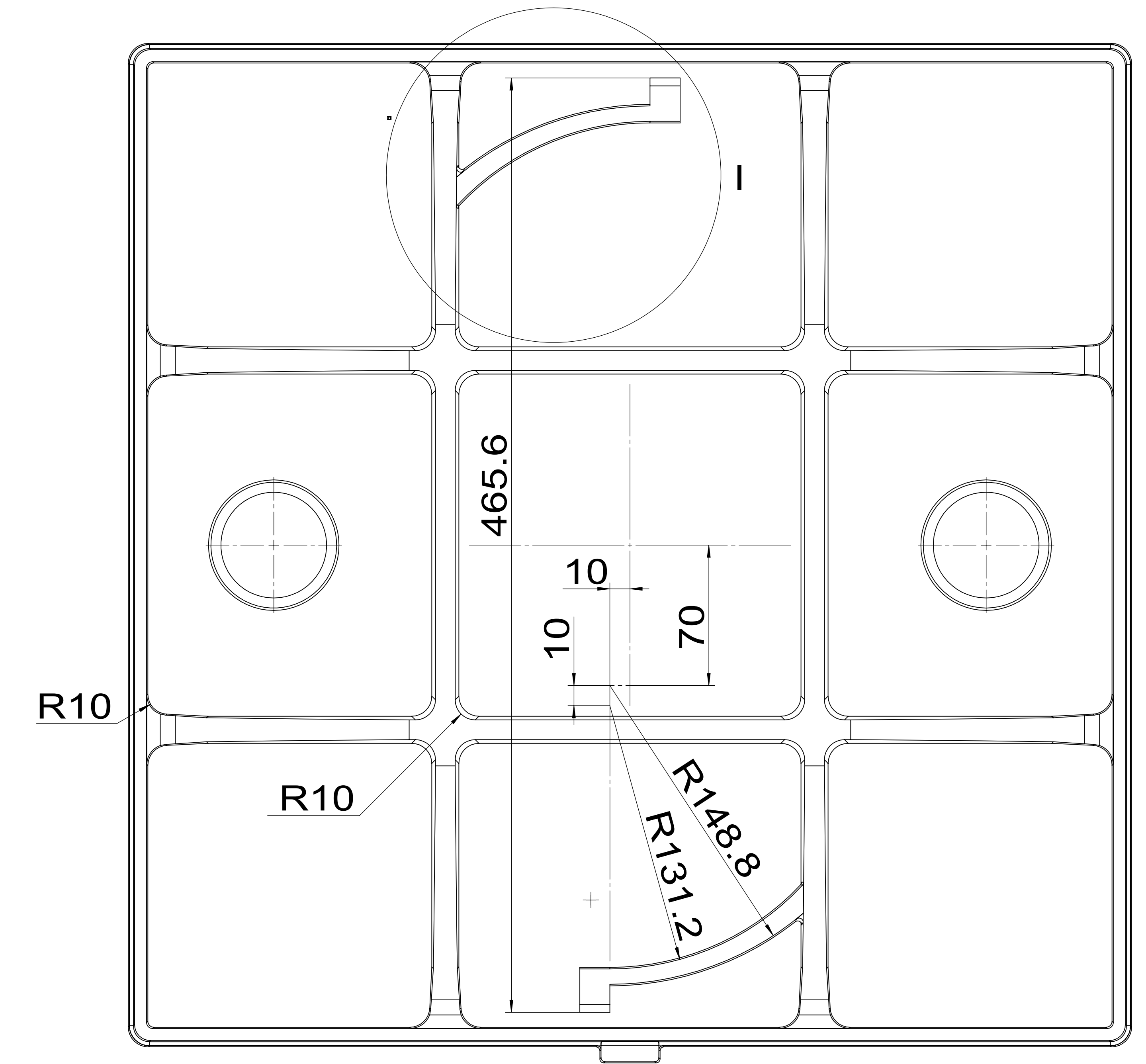
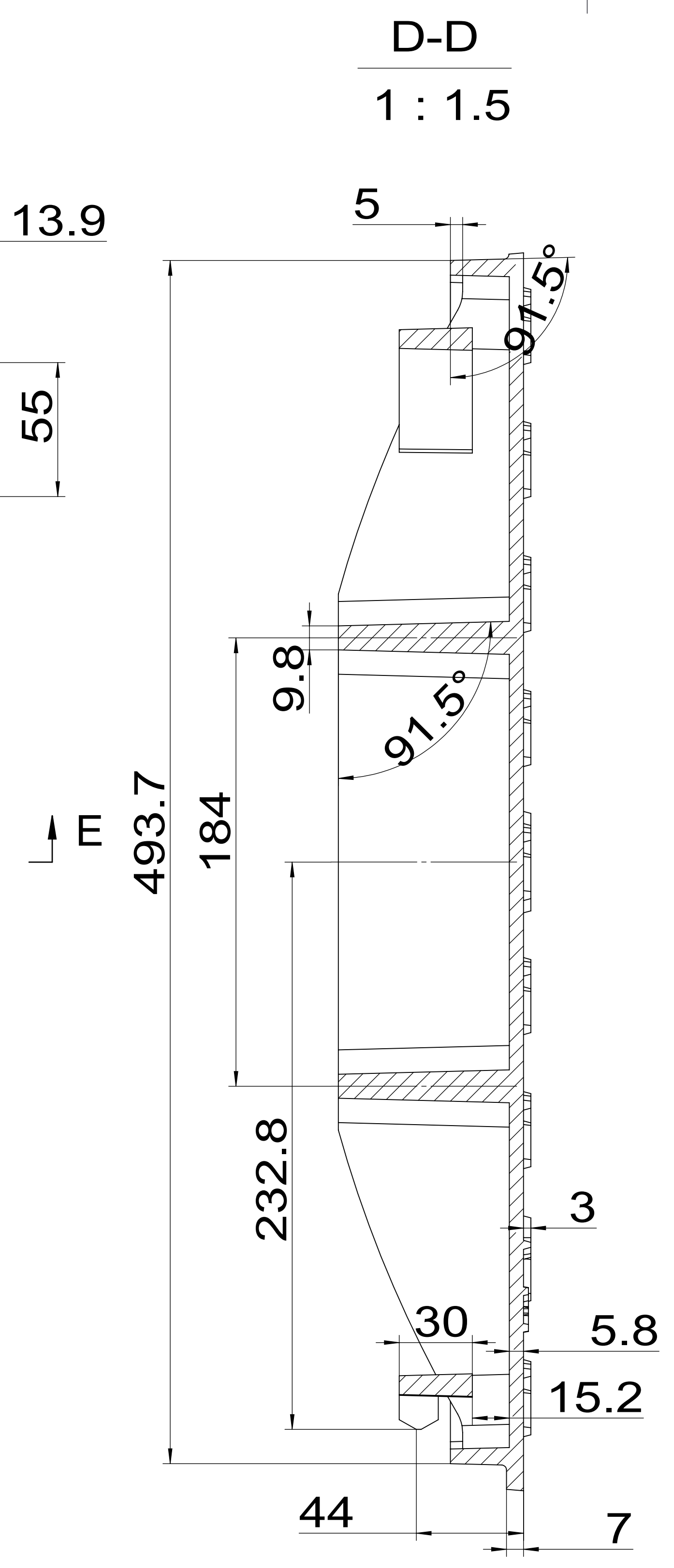
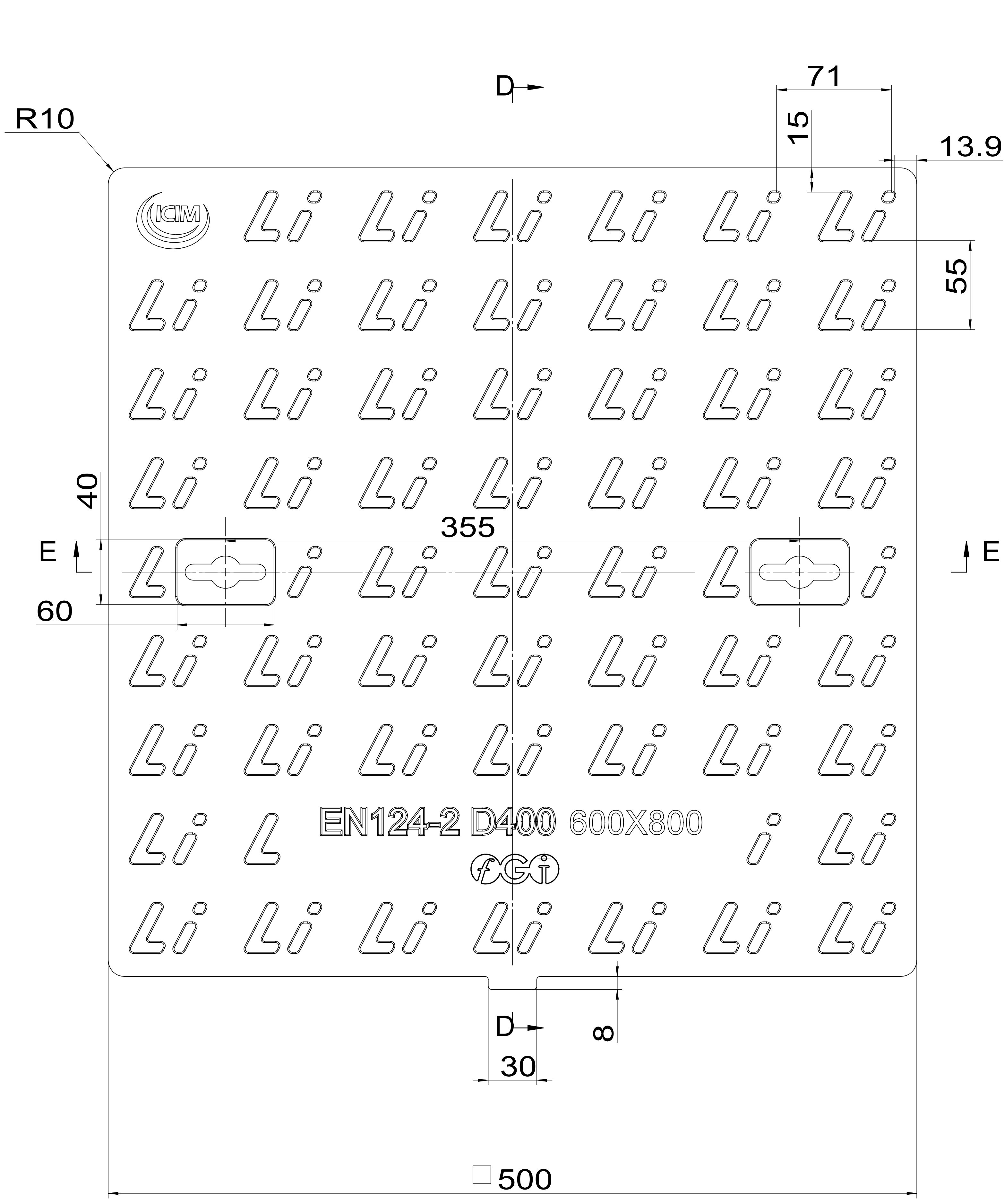
- Technical requirement
- 1、 pattern draft is 1-2° of main beams ,cover ,grids, frame side.
 - 2、 pattern draft is 5-10° of assistive beams ,gird holes ,outside.
 - 3、 pattern draft is 15° of surface patterns ,mark, logo.
 - 4、 casting radius which aren't been marked is R1-R3.

General Dimension Tolerance	General Weight Tolerance
According To ISO 8062-CT10	Tolerance(%)
	±5%

MATERIAL	GJS500-7	WEIGHT	34.9KG	CLASS	EN124-2 D400	SCALE	MARK:		
DESIGNED BY	Sid	CHECKED BY	JENNIFER	APPROVED BY - DATE		SIZE	595X595X80	CERTIFICATE NO. / PRODUCT CODE	GB06/66810 GB08/74701 GB10/81666
						ITEM CODE	L-LGSMEN-460L		
						DESIGN DATE	2017/6/28	EDITION	0



MATERIAL	GJS500-7	WEIGHT	11.4KG	CLASS	EN124-2 D400	SCALE	MARK:
DESIGNED BY	Sid	CHECKED BY		APPROVED BY - DATE		SIZE	CERTIFICATE NO. / PRODUCT CODE
				ITEM CODE	L-LGSMEN-460L		
				DESIGN DATE	2017/6/28		EDITION



MATERIAL	GJS500-7	WEIGHT	23.5KG	CLASS	EN124-2 D400	SCALE	MARK:
DESIGNED BY	Sid	CHECKED BY		APPROVED BY - DATE		SIZE	CERTIFICATE NO. / PRODUCT CODE
				ITEM CODE	L-LGSMEN-460L		
				DESIGN DATE	2017/6/28	EDITION	0